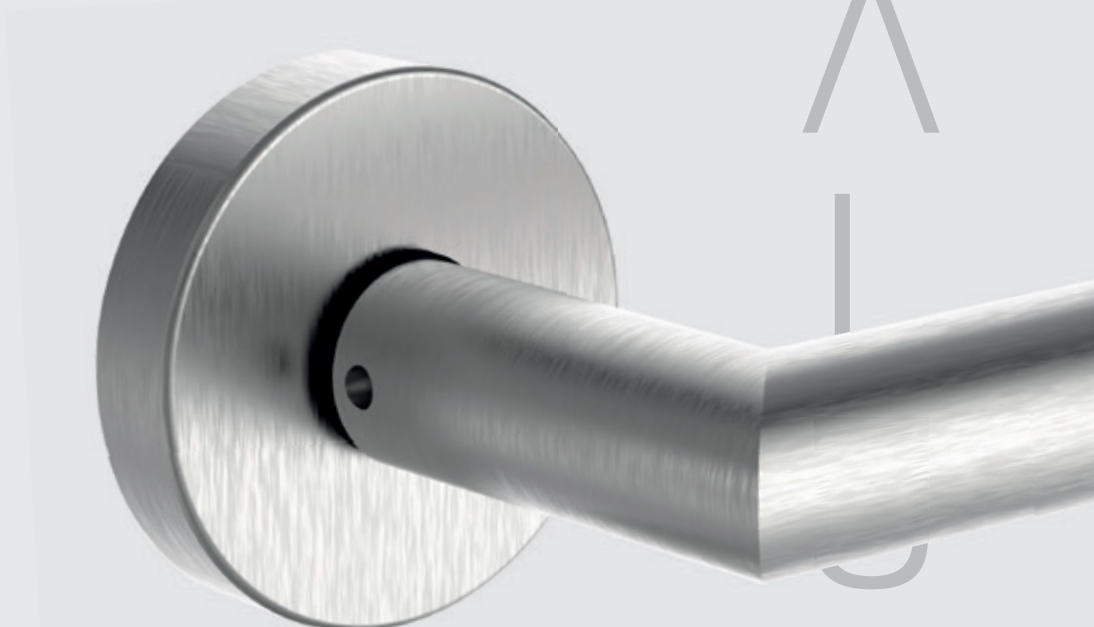


**ROSTEX®**



C  
A  
T  
A  
L  
O  
G  
U  
E

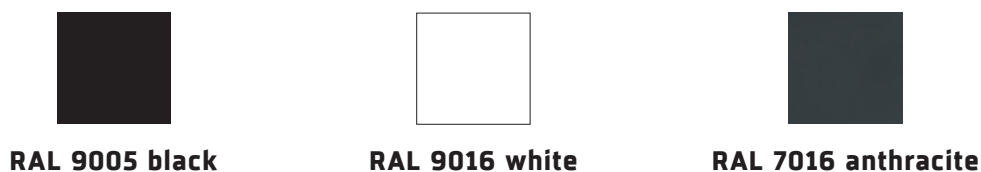
# Content

Introduction .....	02-03
Security fittings .....	04-35
Pull handles .....	36-42
Door handles .....	43-61
Door handles Economy Line .....	62-74
Supplementary fittings .....	75-77
Mortise locks .....	78-80
Furniture locks .....	81
Hand tools .....	82-83

## Finishes



## COLOUR FINISHES



Powder coating is a modern surface treatment technology, that is applied to the painted part as a free-flowing, dry powder using an electrostatic paint gun and then cured under heat. The powder is used to create a hard finish that is tougher than conventional paint makes. The main difference from conventional liquid paint, which is delivered via an evaporating solvent is, that it does not contain any volatile substances, which does not burden the environment or harm the health of workers during application.

## Guarantee

Selected finishes with a prolonged guarantee (5 years Cr-stainless steel satin and 10 years stainless steel)



ČESKÝ  
VÝROBEK  
CZECH PRODUCT

## Cylinder protector




- tested according to EN 1906
- security grades RC.3 and RC.4
- with drilling resistant ring
- firmly welded to the lockplate
- made from stainless steel

## Symbols

**BB** key hole  
**PZ** cylinder hole  
**WC** toilet knob


**3** Resistant class 3 (RC.3)


**4** Resistant class 4 (RC.4)


 Design with plastic fixing inserts


**Z** Design with fixing metal attachments

**3** Designed for high traffic doors

 Strengthen construction for greater loading

 Designed for fire proof doors

 Universal handle, for both door furniture and security fittings

 Reversible mechanism (reversible spring)

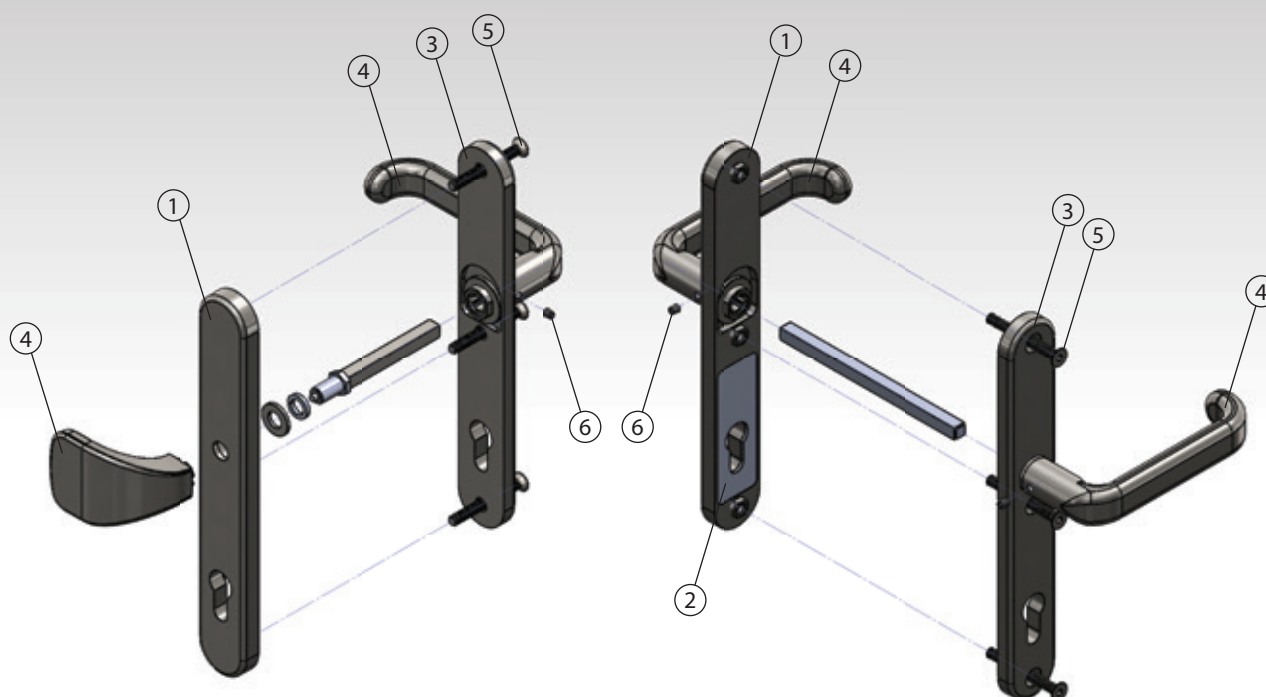
 Tested to 200 000 cycles

 Section of the handle

 Section of the handle

DIN EN 179  
 Escape route

# Important design PARAMETERS - GRANDE



1. Outer security shield – solid plate made of stainless steel, reversible spring included
2. Steel backplate – made of stainless steel, resistant against drilling, hardened up to 52 HRc
3. Inner shield – solid plate made of steel, reversible spring included
4. Handle and knob are made of stainless steel, resistant to external environment. Handles are firmly attached to the shields
5. Connecting through screws M6 provide tight and resistant connection of the shields
6. Grub screw for lever handle fixing

Security fittings GRANDE conforms to the requirements of EN 1906 standard for a usage in burglary resistant doors. The design of the security fittings ROSTEX meets the test parameters prescribed within the standard and fulfill the strict security demands of resistant class 3.

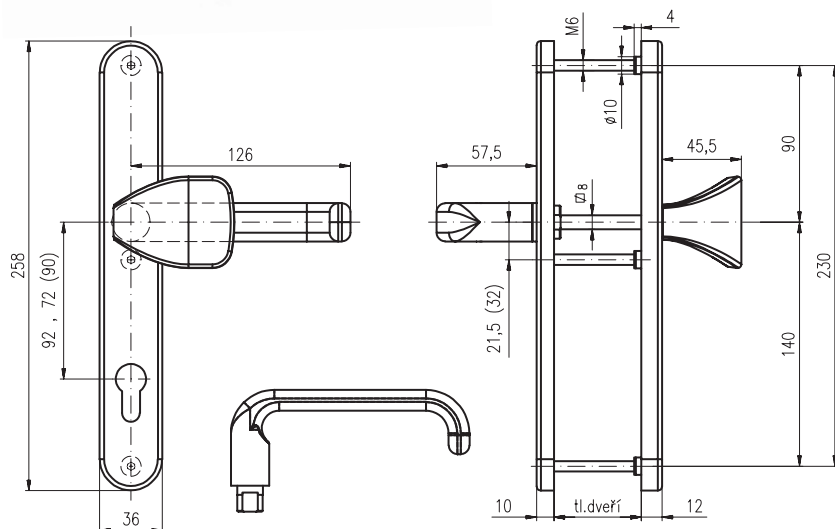


# SECURITY HARDWARE

## GRANDE 802



**807 GRANDE**



**Pitch:** 72, 90, 92 mm

**Door thickness:** 40-50 mm

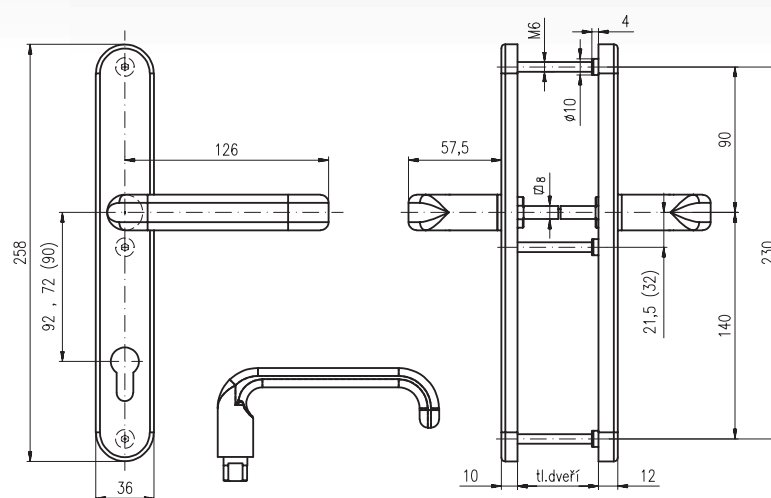
Compatible with wide range of mortise locks. High durability, tested to 200 000 cycles. Reversible spring of handle (variant handle-handle: spring loaded handles on both sides). Stainless steel satin finishing.

Side orientation of the lever handle RIGHT (for right hinge side opening outwards) or LEFT (for left hinge side opening outwards). Certificate according to EN 1906.

For thicker doors request appropriate fastenning material.



7200

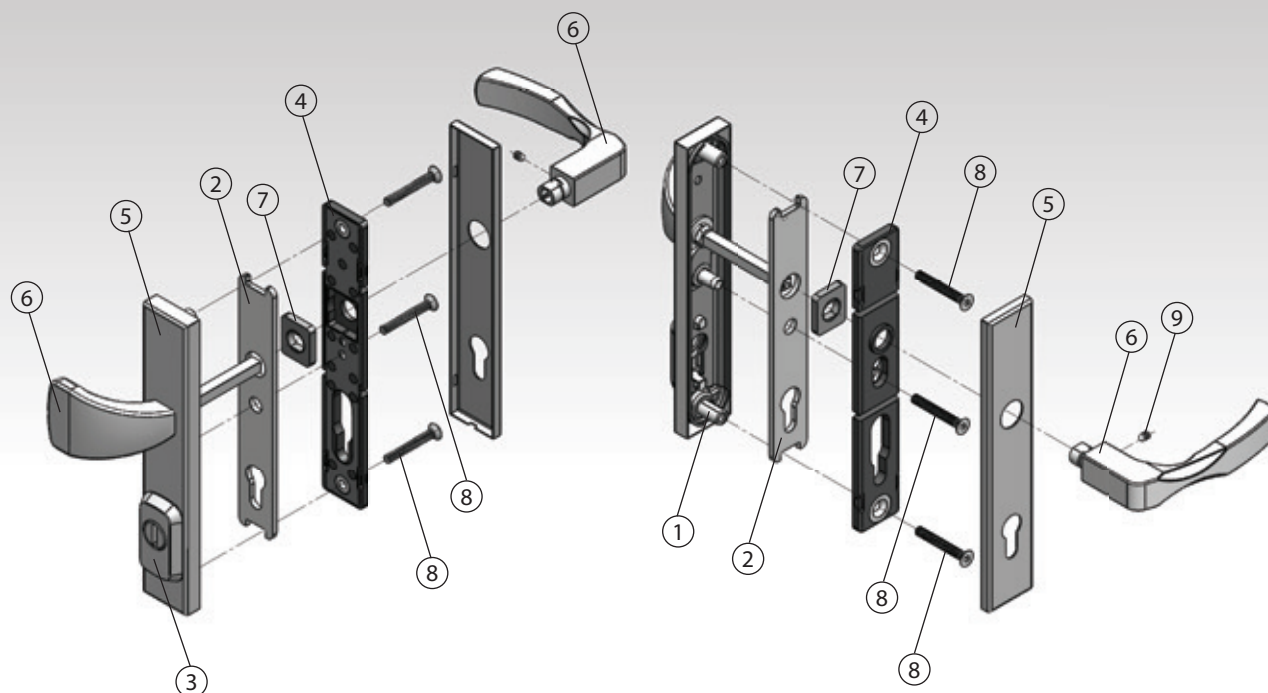


Also available with the split square spindle 9x9 crossing to 8x8.



7200

## Important design PARAMETERS RN

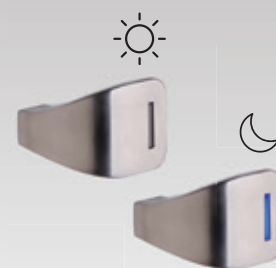
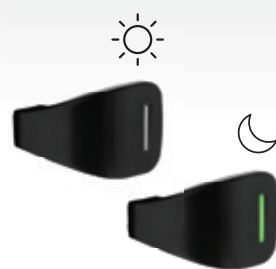
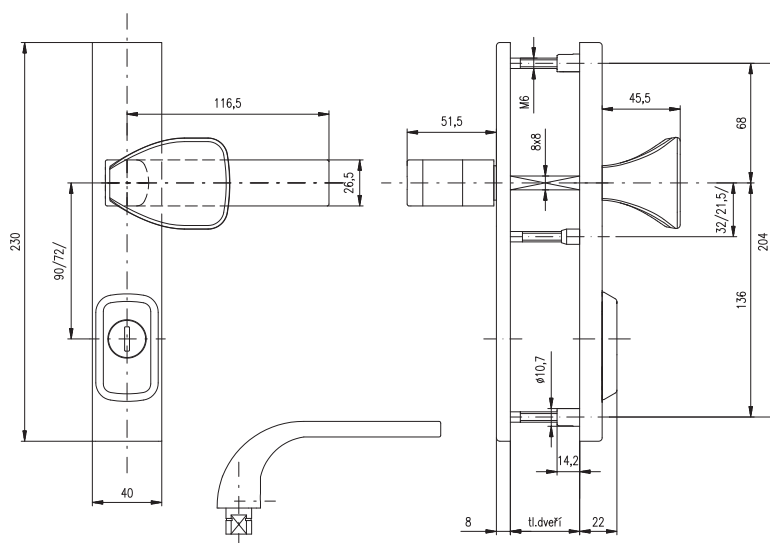


1. Security back plate — steel plate with three bolts
2. Covering plate — additional steel plate hardened up to 52 HRc
3. Cylinder protector — made from stainless steel casting with drilling resistant ring, hardened up to min. 50 HRc
4. Inner plate with steel body
5. Front and outer shields made from stainless steel with resistant surface treatment
6. Stainless steel lever handle and knob
7. Reversible mechanism
8. Connecting through screws M6 class 8.8 provide a tight and resistant connection of the backplates
9. Grub screw for lever handle fixing

Security fittings ROSTEX conforms to the requirements of EN 1906 standard for a usage in burglary resistant doors. The design of the security fittings ROSTEX meets the test parameters prescribed within the standard and fulfill the strict security demands of resistant class 3.

**RN4 FONDI****RN4 FONDI black****RN802 FONDI****RN807 FONDI**

## RN1 FONDI

**knob LUMINO****knob LUMINO  
black (RAL 9005)****Pitch:** 72, 90, (92) mm**Door thickness:** 38-50 mm

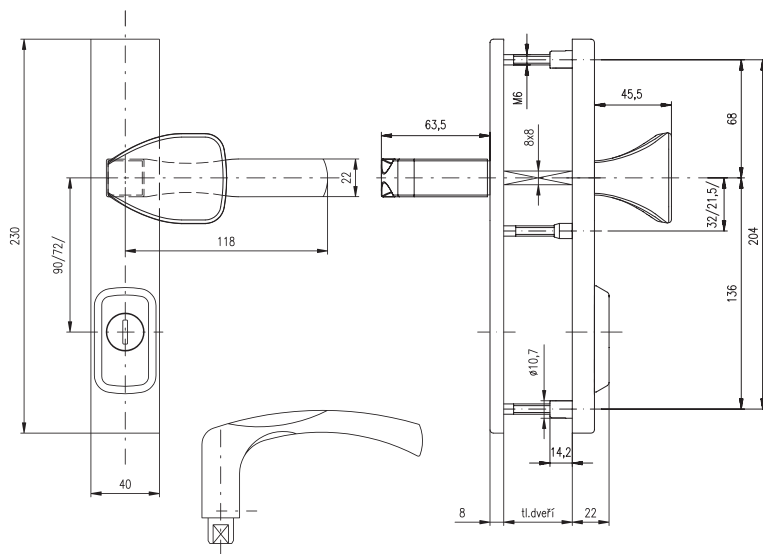
For thicker doors, see the fastenning material, page 35.

Available with square knob LUMINO.

Cylinder must not protrude above the door surface more than 15,5 mm.



## RN1 MANDELO



**Pitch:** 72, 90, (92) mm

**Door thickness:** 38-50 mm

For thicker doors, see the fastening material, page 35.

Available with square knob LUMINO.

Cylinder must not protrude above the door surface more than 15,5 mm.



**RN4 MANDELO**



**RN802 MANDELO**

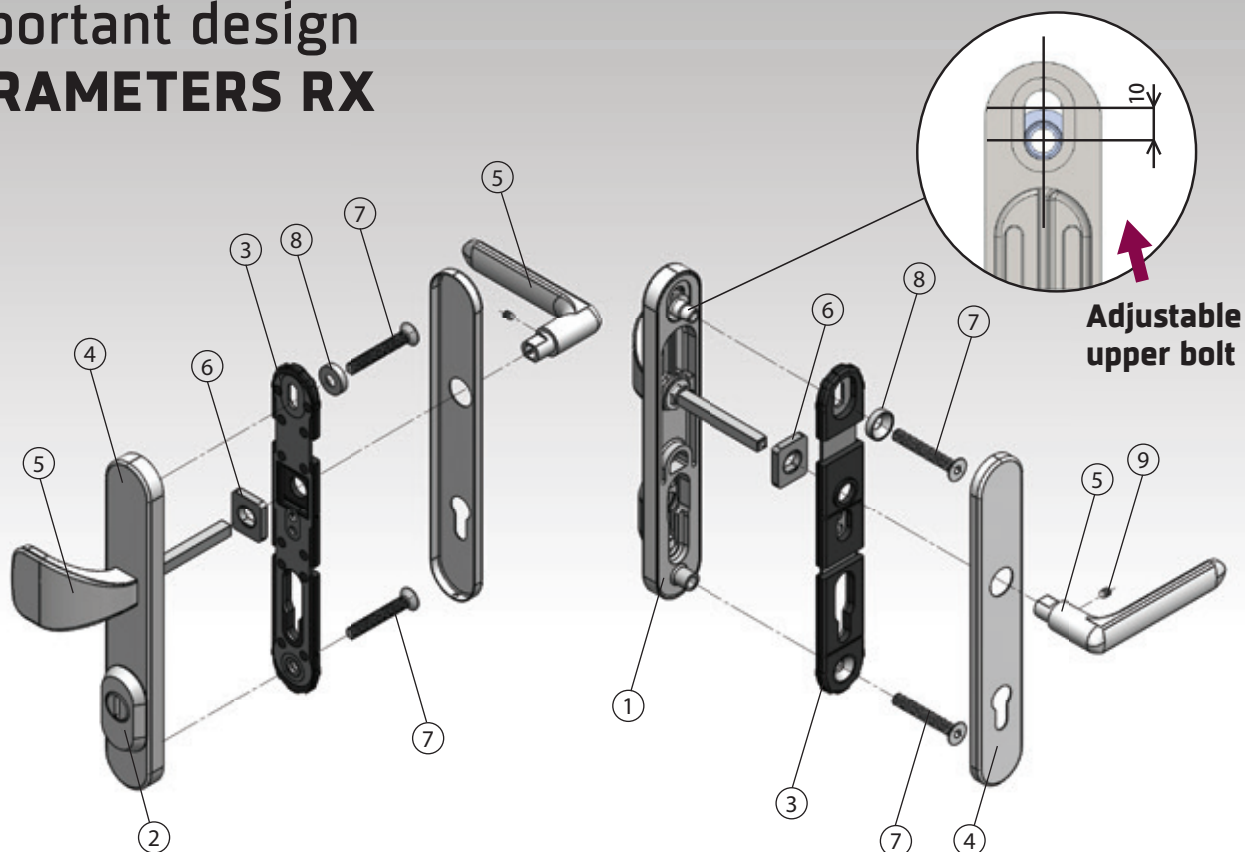


**RN807 MANDELO**



7200

## Important design PARAMETERS RX

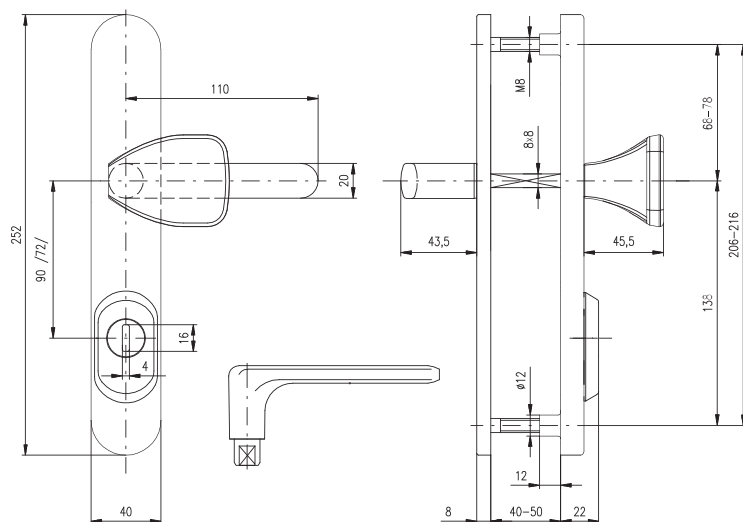


**Adjustable upper bolt enables shifting its position from the range 68-78 mm.**

1. Security backplate of the front shield with adjustable bolt - massive steel casting
2. Cylinder protector made from stainless steel casting with drilling resistant ring, hardened up to min. 50 HRC
3. Inner plate with steel body
4. Front and outer shields made from stainless steel with resistant surface treatment
5. Handles and knobs are made either from stainless steel or zinc alloy with galvanic treatment, resistant to external environment
6. Reversible mechanism
7. High strength bolts M8 class 8.8, provide a tight and resistant connection of the backplates
8. Shaped washer of the upper bolt
9. Grub screw for lever handle fixing

Security fittings ROSTEX conforms to the requirements of EN 1906 standard for a usage in burglary resistant doors. The design of the security fittings ROSTEX meets the test parameters prescribed within the standard and fulfill the strict security demands of resistant class 3 or 4.

## SECURITY

**RX802-40 EXCLUSIVE****RX807-40 EXCLUSIVE**

**Door thickness:** 40-50 mm

For other types of lever handles see page 33.

Cylinder must not protrude above the door surface more than 15,5 mm.





## RX1-50 EXCLUSIVE - RC.3



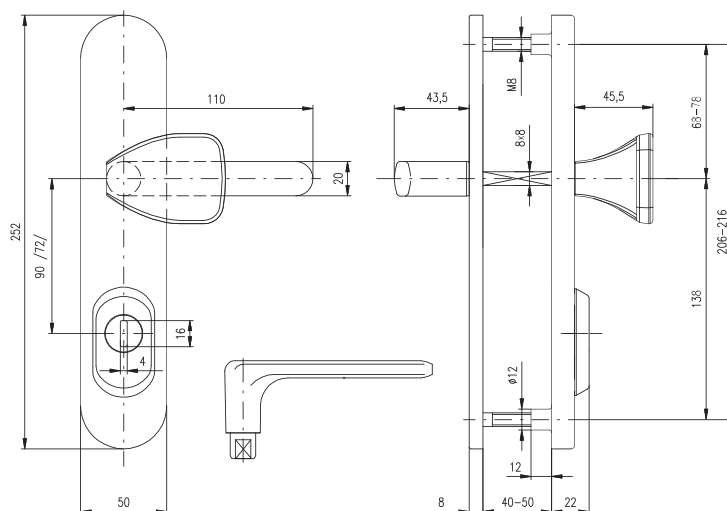
**RX4-50 EXCLUSIVE**



**RX802-50 EXCLUSIVE**



**RX807-50 EXCLUSIVE**



**Pitch:** 72 mm, 90 mm, 92 mm

**Door thickness:** 40-50 mm

For thicker doors, see the fastenning material, page 34.

For other types of lever handles see page 33.

Cylinder must not protrude above the door surface more than 15,5 mm.

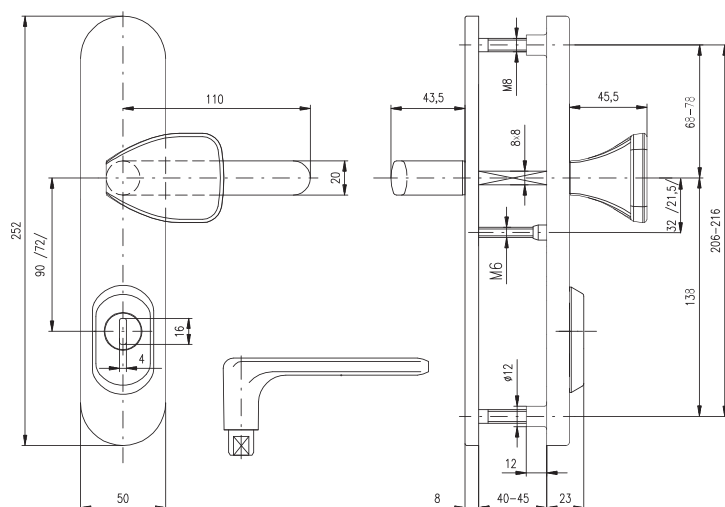




## RX1-50 EXCLUSIVE - RC.4



**RX4-50 EXCLUSIVE**



**Pitch:** 72 mm, 90 mm

**Door thickness:** 40-45 mm

For thicker doors, see the fastening material, page 34.

For other types of lever handles see page 33.

Cylinder must not protrude above the door surface more than 17 mm.



## RX1-50 SOLID - RC.3



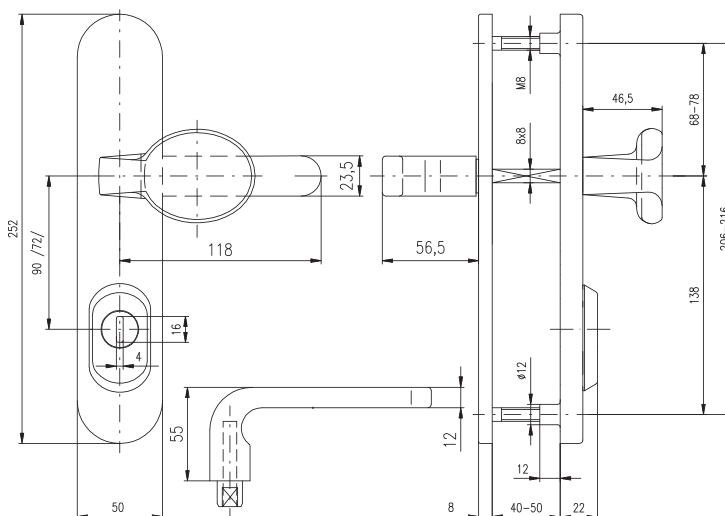
**RX4-50 SOLID**



**RX802-50 SOLID**



**RX807-50 SOLID**



**Pitch:** 72 mm, 90 mm, 92 mm

**Door thickness:** 40-50 mm

For thicker doors, see the fastenning material, page 34.

For other types of lever handles see page 33.

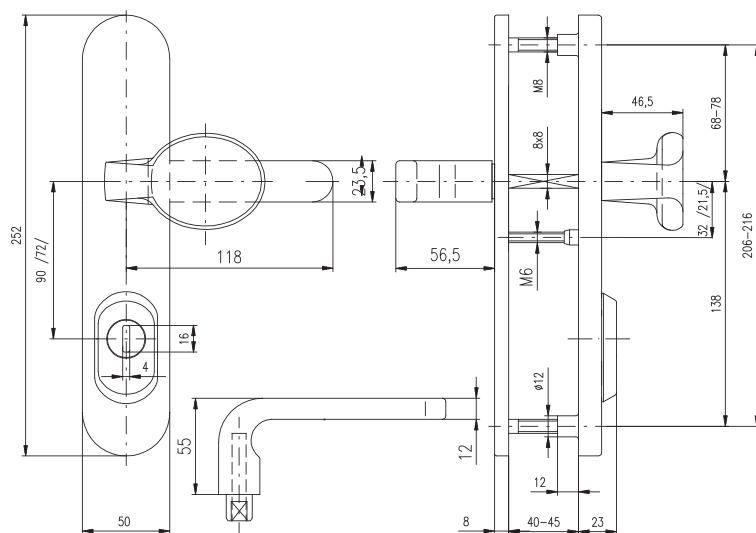
Cylinder must not protrude above the door surface more than 15,5 mm.



## SECURITY



**Adjustable  
upper bolt**



For other types of lever handles see page 33.

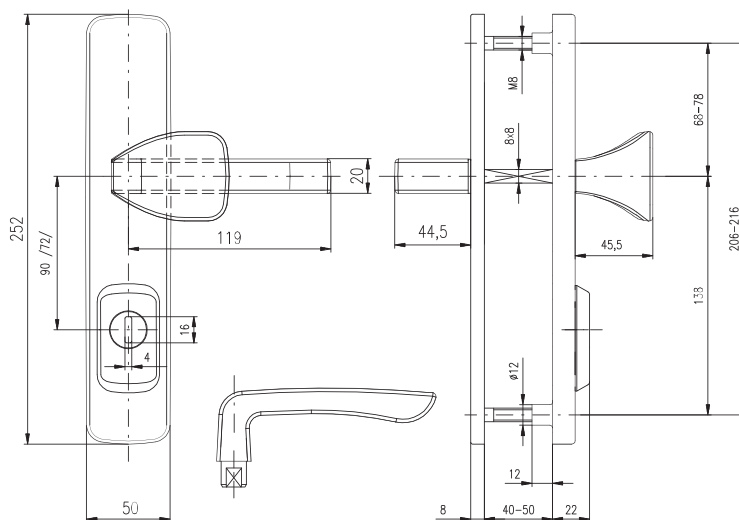


## RX802 ASTRA



## RX807 ASTRA

# RX1 ASTRA - RC.3



**Pitch:** 72 mm, 90 mm, 92 mm

**Door thickness:** 40-50 mm

For thicker doors, see the fastenning material, page 34.

For other types of lever handles see page 33.

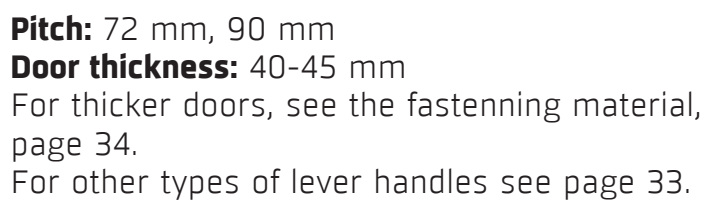
Cylinder must not protrude above the door surface more than 15,5 mm.



## SECURITY

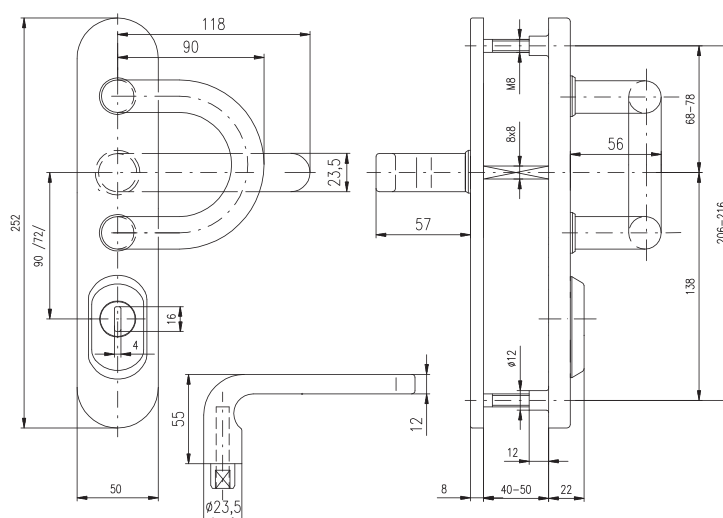


**Adjustable  
upper bolt**



Cylinder must not protrude above the door surface more than 17 mm.



**RX802-50 FORTE****RX1-50 FORTE****Pitch:** 72 mm, 90 mm, 92 mm**Door thickness:** 40-50 mm

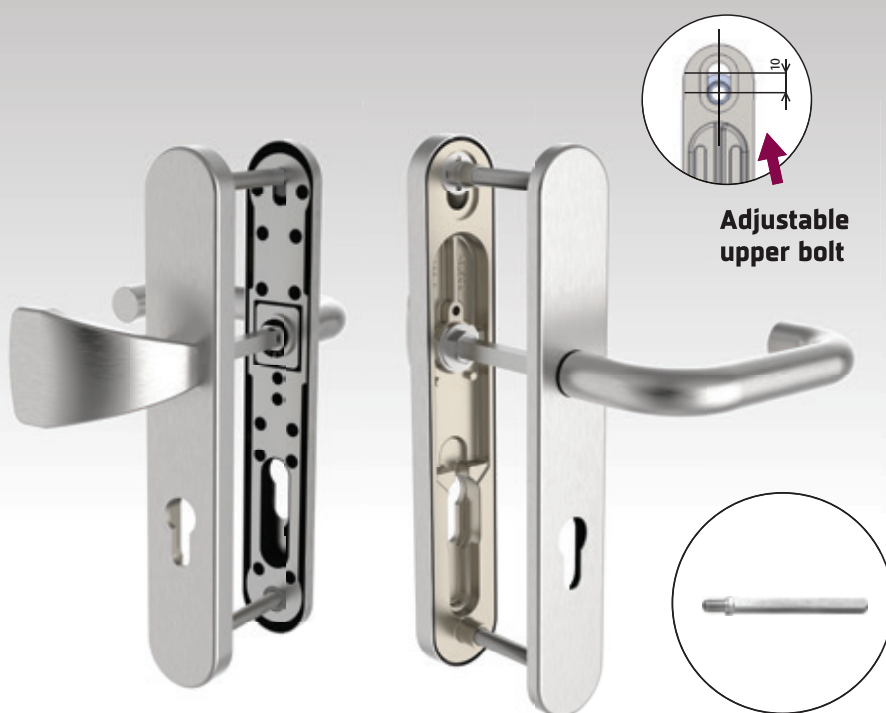
For thicker doors, see the fastenning material, page 34.

Cylinder must not protrude above the door surface more than 15,5 mm.

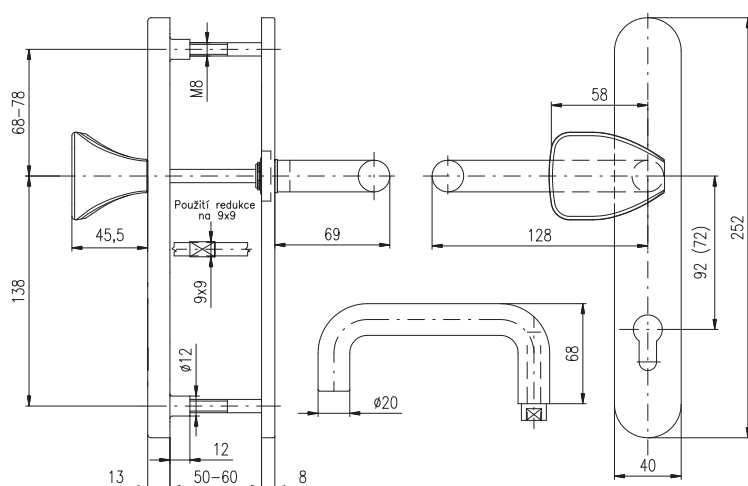
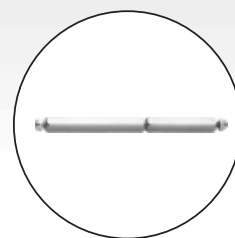


7200

# RX802-40 PANIK



RX807-40 PANIK



**Pitch:** 72 mm, 90 mm, 92 mm

**Door thickness:** 50-60 mm

Compatible with wide range of panic mortise locks. Suitable for escape routes according to EN179.

With square spindle 8x8 mm, included spindle reduction 9x9mm (10x10 on request). Lever handle-knob-one spring, handle-handle-two springs. Set is working only on the doors opening outwards. Side orientation of the lever handle RIGHT (for right hinge side opening outwards) or LEFT (for left hinge side opening outwards).

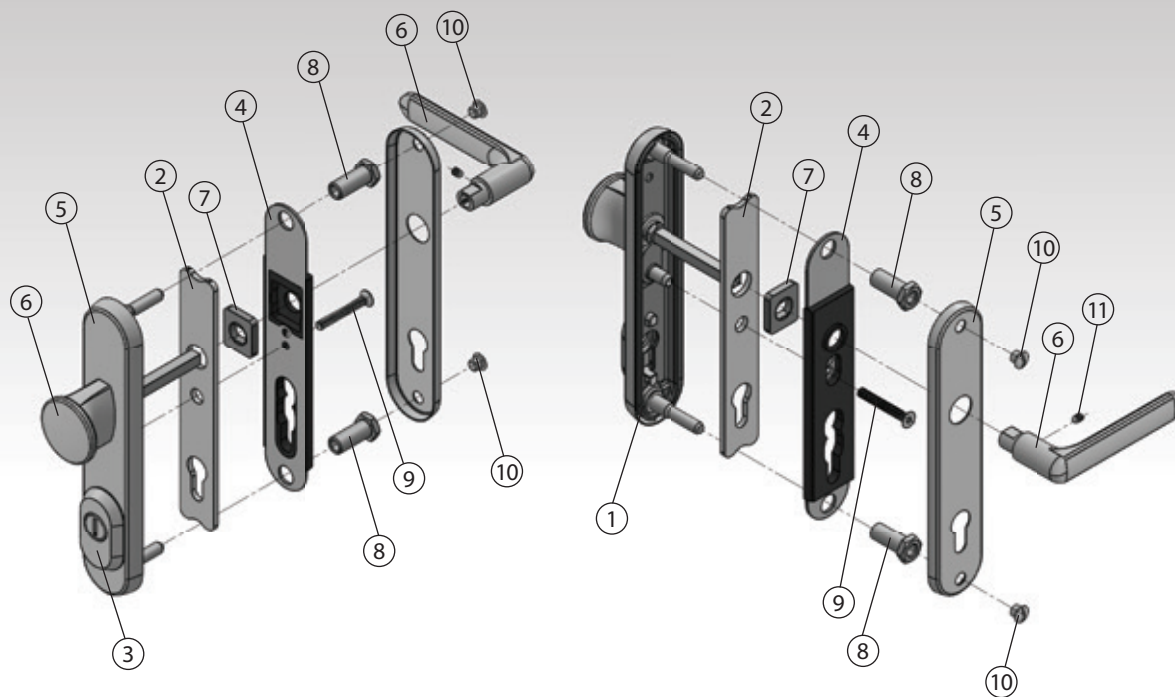
DIN EN 179



7200



## Important design PARAMETERS R

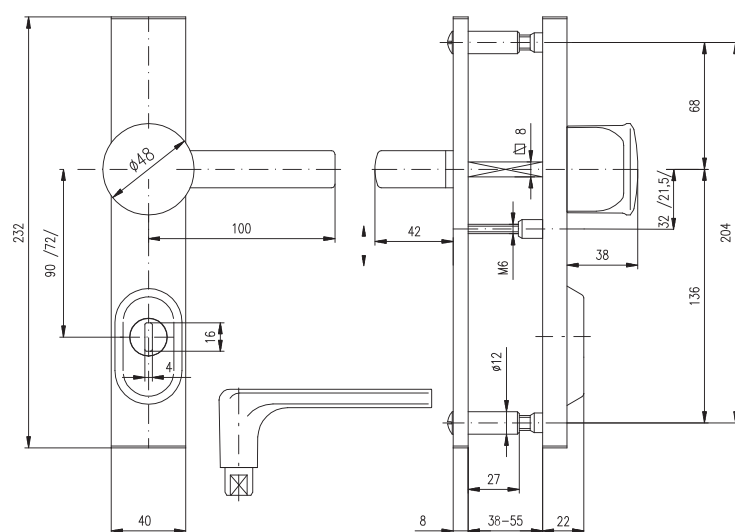


1. Outer shield on the plate
2. Steel backplate - th. 4 mm hardened up to 52 HRC
3. Cylinder protector made from stainless steel casting with drilling resistant ring, hardened up to min. 50 HRC
4. Inner plate with steel body
5. Inner shield made of stainless steel or brass with galvanic plating
6. Handles and knobs are made either from stainless steel or zinc alloy with galvanic treatment, resistant to external environment
7. Reversible mechanism
8. Connecting bolts
9. Middle screw M6, class 8.8., provides tight and resistant connection of the backplates
10. Cover screws
11. Grub screw for lever handle fixing

Security fittings ROSTEX conforms to the requirements of EN 1906 standard for a usage in burglary resistant doors and to the requirements of ČSN PO ENV standard - manual attempted forced entry resistance. The design of the security fittings ROSTEX meets the test parameters prescribed within the standard and fulfill the strict security demands of security class 3 or 4.



## R1 - RC.3



**Pitch:** 72 mm, 90 mm

**Door thickness:** 38-55 mm

For thicker doors, see the fastenning material, page 34.

Available also with square knob see page 33.

Security fitting R3 supplementary  
(height 132 mm x width 40 mm, C-C distance 104 mm).

Cylinder must not protrude above the door surface more than 15,5 mm.



**R4**



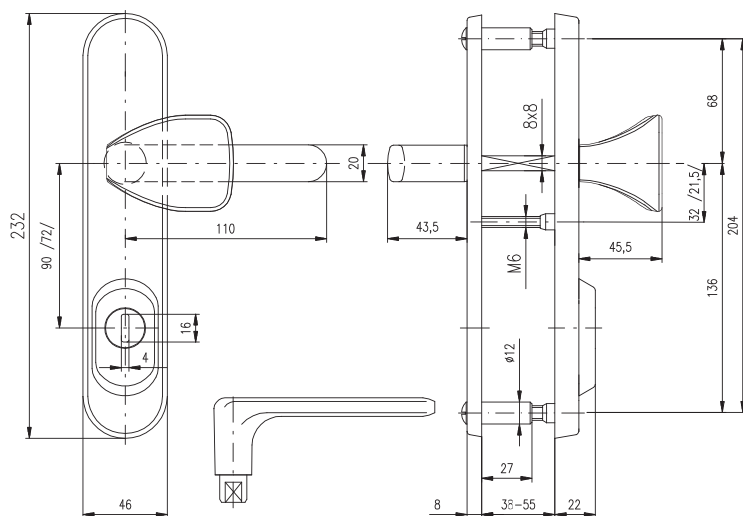
802



807



**R3**

**R4/O EXCLUSIVE****802/O EXCLUSIVE****807/O EXCLUSIVE****R3/O****R1/O EXCLUSIVE - RC.3****Pitch:** 72 mm, 90 mm**Door thickness:** 38-55 mm

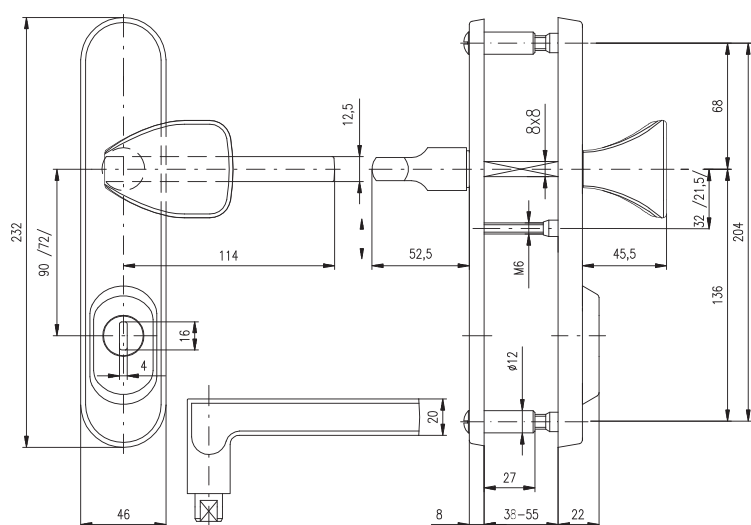
For thicker doors, see the fastening material, page 34.

Available also with knob see page 33.

Security fitting R3 supplementary  
(height 132 mm x width 40 mm, C-C distance 104 mm).Cylinder must not protrude above the door surface  
more than 15,5 mm.

0100 7200 8000

## R1/O BRIT - RC.3



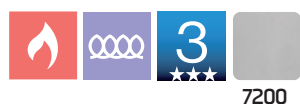
**Pitch:** 72 mm, 90 mm

**Door thickness:** 38-55 mm

For thicker doors, see fastenning material on page 34.

Security fitting R3 supplementary  
(height 132 mm x width 46 mm, C-C distance 104 mm).

Cylinder must not protrude above the door surface  
more than 15,5 mm.



**R4/O BRIT**



**802/O BRIT**



**807/O BRIT**



**R3/O**

## R1/O BARYT - RC.3



**R4/O BARYT**



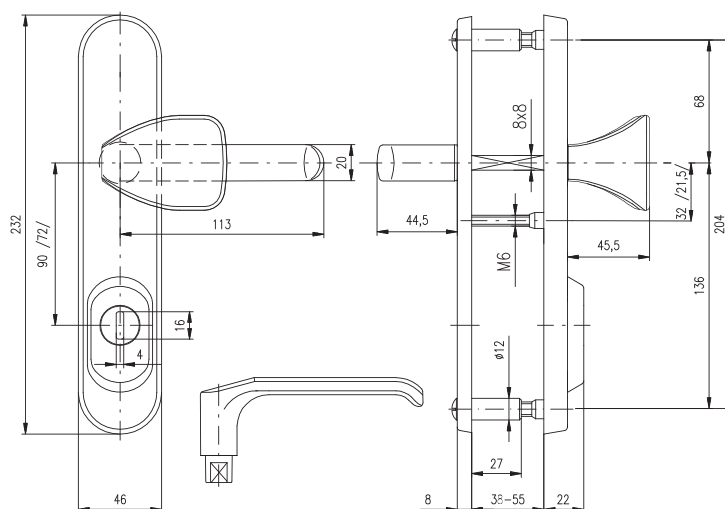
**802/O BARYT**



**807/O BARYT**



**R3/O**



**Pitch:** 72 mm, 90 mm

**Door thickness:** 38-55 mm

For thicker doors, see the fastenning material, page 34.

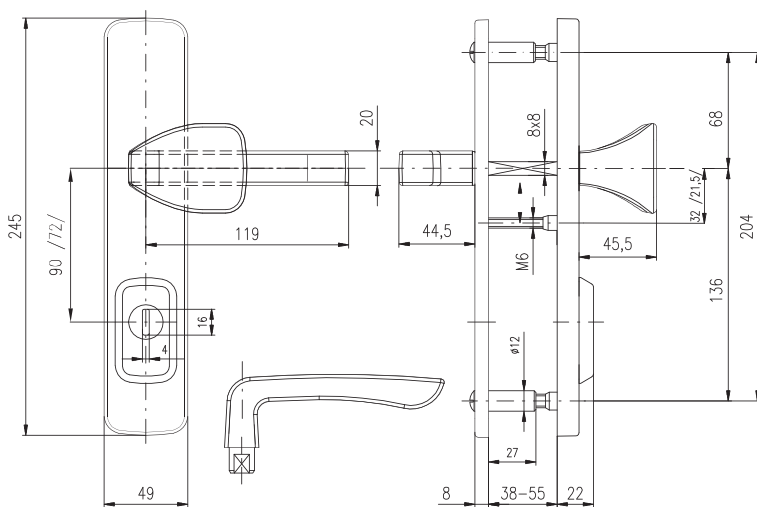
Security fitting R3 supplementary  
(height 132 mm x width 46 mm, C-C distance 104 mm).

Cylinder must not protrude above the door surface  
more than 15,5 mm.



0100 7200 8000

# R1 ASTRA - RC.3



**Pitch:** 72 mm, 90 mm

**Door thickness:** 38-55 mm

For thicker doors, see the fastenning material, page 34.

Security fitting R3 supplementary  
(height 144 mm x width 49,50 mm, C-C distance 104 mm).

Cylinder must not protrude above the door surface  
more than 15,5 mm.



**R4 ASTRA**



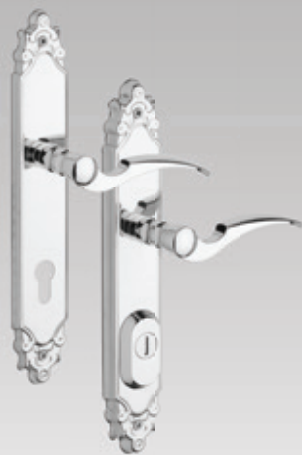
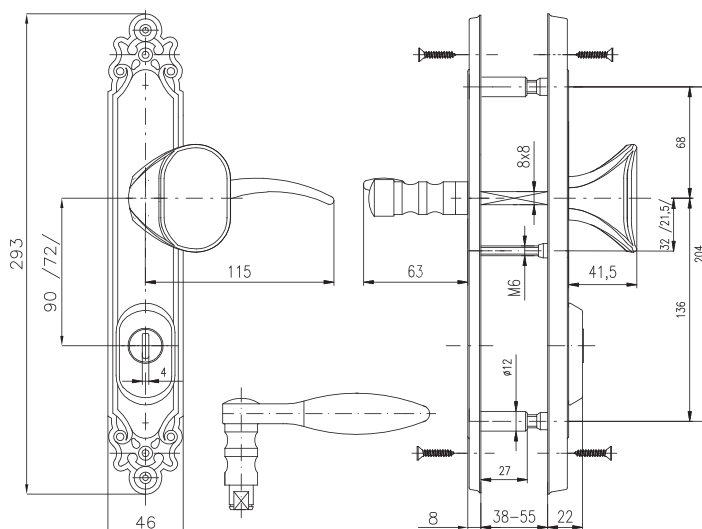
**802 ASTRA**



**807 ASTRA**



**R3 ASTRA**

**R4 ORNAMENTAL****R3 ORNAMENTAL****R1 ORNAMENTAL - RC.3****Pitch:** 72 mm, 90 mm**Door thickness:** 38-55 mm

For thicker doors, see the fastenning material, page 34.

State the orientation of the handle L → R.

Security fitting R3 supplementary  
(height 194 mm x width 50 mm, C-C distance 104,8 mm).

Cylinder must not protrude above the door surface more than 15,5 mm.



0100 8000

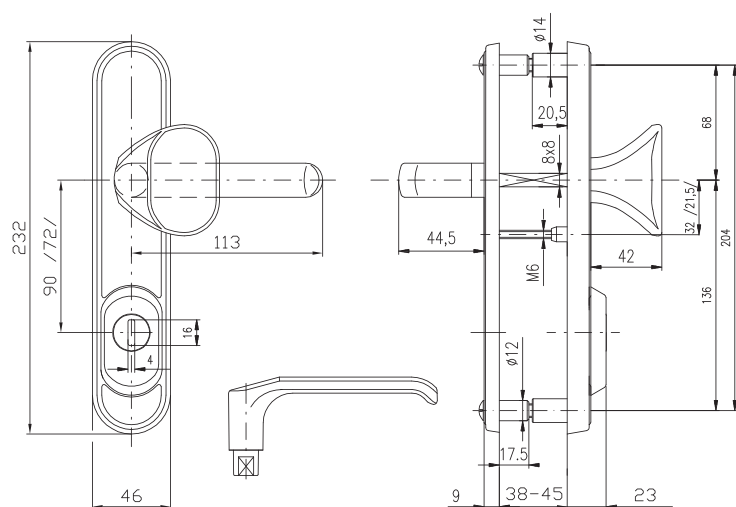
# R1/O DEKOR - RC.4



**R4/O DEKOR**



**R3/O DEKOR**



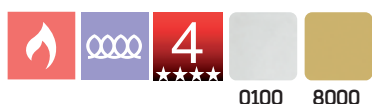
**Pitch:** 72 mm, 90 mm

**Door thickness:** 38-45 mm

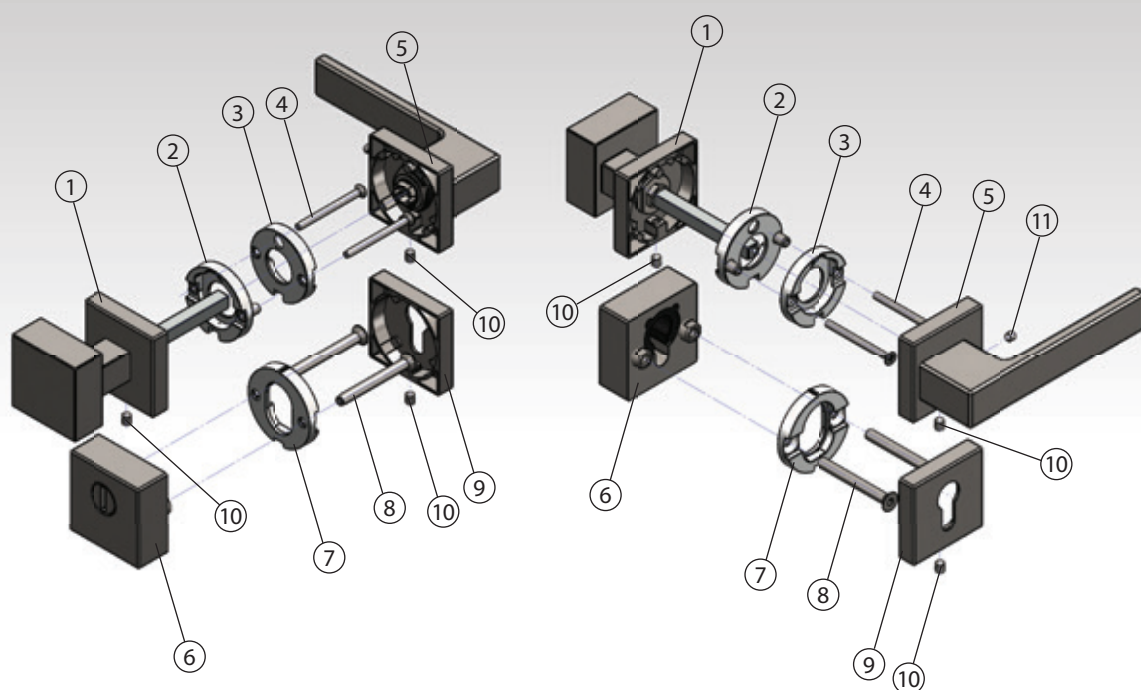
For thicker doors, see the fastening material, page 34.

Security fitting R3/O DEKOR supplementary (height 131 mm x width 46 mm, C-C distance 104 mm).

Cylinder must not protrude above the door surface more than 17 mm.



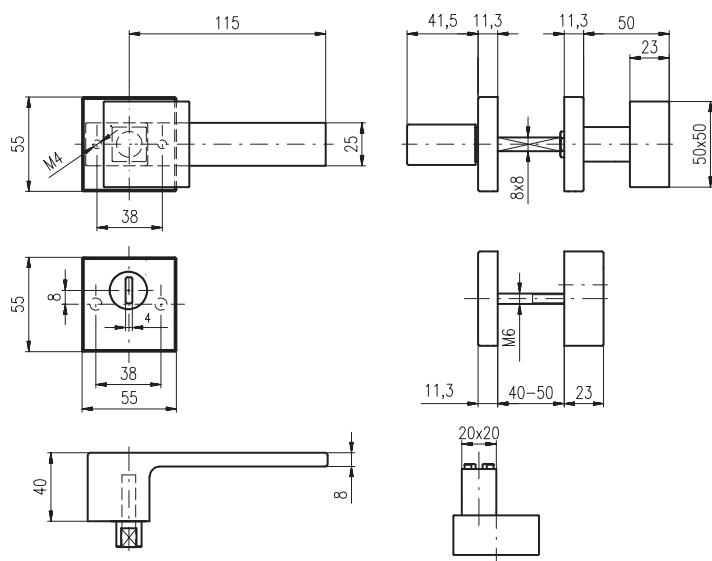
## Important design PARAMETERS - SECURITY RN



1. Outer covering rose with knob – stainless steel casting
2. Outer underose – stainless steel casting
3. Inner underose of the handle – stainless steel casting
4. Connecting through screws – M4 provide connection of the shields through the mortise lock
5. Inner handle with covering rose – stainless steel castings, resistant to external environment. Spring assisted handle is firmly attached to the covering rose
6. Security escutcheon – massive stainless steel casting, with drilling resistant ring, hardened up to 50 HRC
7. PZ underose – stainless steel casting
8. Connecting through screws M6 – provide tight and resistant connection of security escutcheon
9. Inner PZ covering rose – stainless steel casting
10. Grub screws for fixing the covering rose to underose
11. Grub screws for fixing the handle



# Security RN rosette RN1/H RAVENA



**Door thickness:** 40-50 mm

Use mortise lock with backset 80 mm and with through holes enable to install the roses and escutcheon. For thicker doors, see fastenning material, page 34.

Security escutcheon RN3/H supplementary  
(height 55 mm x width 55 mm, C-C distance 38 mm).

Cylinder must not protrude above the door surface  
more than 17 mm.



**RN4/H RAVENA**



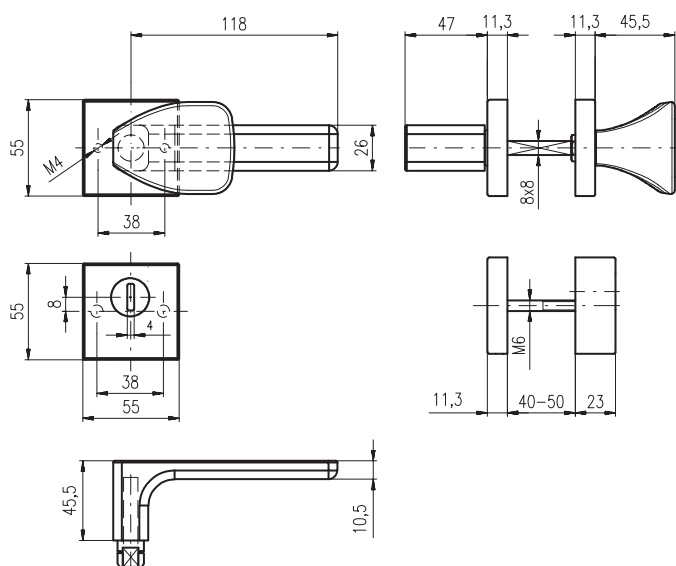
**RN1/H RAVENA black**



**RN3/H supplementary**

**RN4/H SAVONA****RN1/H SAVONA black****RN3/H supplementary****knob LUMINO**

## Security RN rosette RN1/H SAVONA



**Door thickness:** 40-50 mm

Use mortise lock with backset 80 mm and with through holes enable to install the roses and escutcheon. For thicker doors, see fastening material, page 34.

Security escutcheon RN3/H supplementary (height 55 mm x width 55 mm, C-C distance 38 mm).

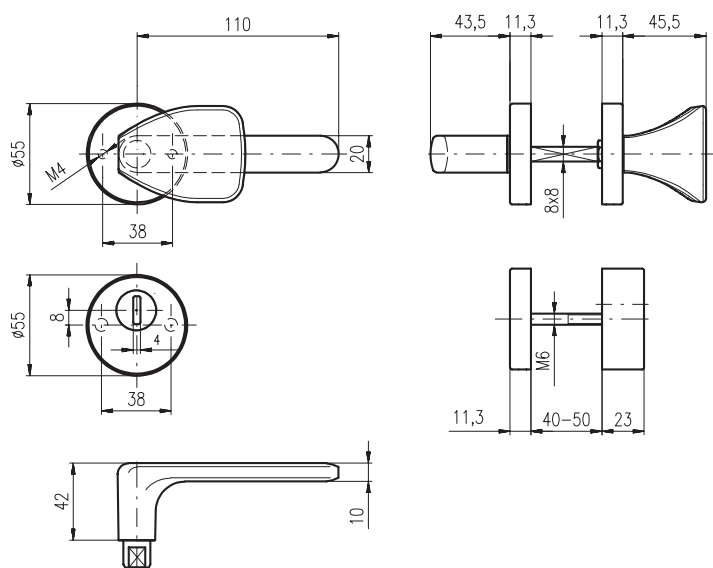
Cylinder must not protrude above the door surface more than 17 mm.



# Security RN rosette RN1/S EXCLUSIVE



**RN4/S EXCLUSIVE**



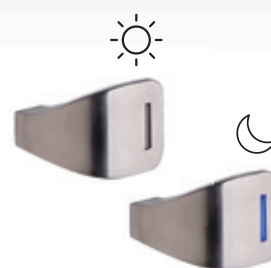
**Door thickness:** 40-50 mm

Use mortise lock with backset 80 mm and with through holes enable to install the roses and escutcheon. For thicker doors, see fastening material, page 34.

For other types of lever handles, see page 33.  
State the orientation of the handle L-R

Security escutcheon RN3/S supplementary  
(diameter 55 mm, C-C distance 38 mm).

Cylinder must not protrude above the door surface  
more than 17 mm.

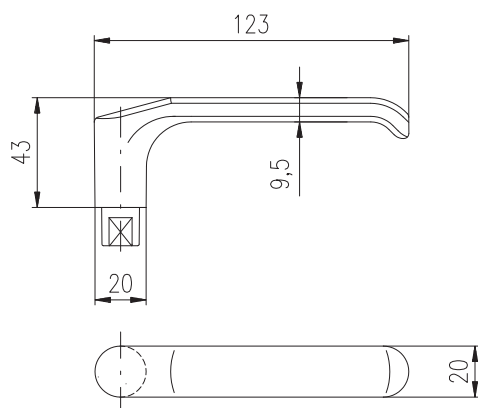
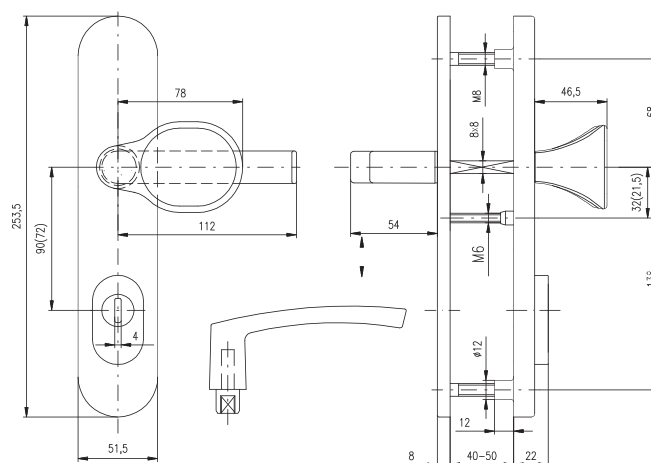


**knob LUMINO**



**RN1/S VIGO**



**EL 4****EL 1 BARYT black****EL 1 - RC.3**

**Pitch:** 72 mm, 90 mm, 92 mm, (if 92 mm, distance of upper and lower bolts is 216 mm)

**Door thickness:** 40-50 mm

Aluminium security fitting with steel lockplate and hidden screws.

For thicker doors, see fastenning material, page 34.

**Finish:** F1-ELOX — silver

EL BARYT black matte (RAL 9005)

Cylinder must not protrude above the door surface more than 17 mm.



# SPARE PARTS for security fittings

EXCLUSIVE



ASTRA



BARYT



BRIT



MILANO



FONDI



NAPOLI



MANDELO



CORNO



SOLID



BRAVO



TREVISO



VIGO



BOLOGNA



SAVONA



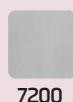
KNOB



SQUARE KNOB

SQUARE KNOB  
LUMINO

TEAR SHAPED KNOB



# FASTENING MATERIAL

## 802, R1



Fastenning material for 802, R1 door thickness 38-55 mm - standard. For 802, R1 door thickness 56-70 mm - further extensions per 15 mm up to 100 mm.

## 807, R4



Fastenning material for 807, R4 door thickness 38-55 mm - standard. For 807, R4 door thickness 56-70 mm - further extensions per 15 mm up to 100 mm.

## RX802, RX1 - RC.3



Fastenning material for RX802, RX1 door thickness 40-50 mm - standard. For RX802, RX1 door thickness 51-60 mm - further extensions per 10 up to 100 mm.

## RX807, RX4 - RC.3



Fastenning material for RX807, RX4 door thickness 40-50 mm - standard. For RX807, RX4 door thickness 51-60 mm - further extensions per 10 up to 100 mm.

## RX1 - RC.4



Fastenning material for RX1 door thickness 40-45 mm - standard. For RX1 door thickness 46-50 mm - further extensions per 5 up to 100 mm.

## RX4 - RC.4



Fastenning material for RX4 door thickness 40-45 mm - standard. For RX4 door thickness 46-50 mm - further extensions per 5 up to 100 mm.

## RN1/H, RN1/S



Fastenning material for R1/H, R1/S door thickness 46-50 mm - standard. For R1/H, R1/S door thickness 51-55 mm - further extensions per 5 up to 100 mm.

## RN4/H, RN4/S



Fastenning material for R4/H, R4/S door thickness 46-50 mm - standard. For R4/H, R4/S door thickness 51-55 mm - further extensions per 5 up to 100 mm.

## EL1



Fastenning material for EL1, door thickness 40-50 mm - standard. Fastenning material for EL1, door thickness 51-60 mm/61-70 mm - further extension per 5 mm up to 100 mm.

## EL4



Fastenning material for EL4, door thickness 40-50 mm - standard. Fastenning material for EL4, door thickness 51-60 mm/61-70 mm - further extension per 5 mm up to 100 mm.

**RN1, RN802**

Fastenning material for RN1, RN802, door thickness 38-50 mm - standard. Fastenning material for RN1, RN802, door thickness 51-55 mm - further extension per 5 mm up to 100 mm.

**RN4, RN807**

Fastenning material for RN4, RN807, door thickness 38-55 mm - standard. Fastenning material for RN4, RN807, door thickness 51-55 mm - further extension per 5 mm up to 100 mm.

**SPLIT SPINDLE PANIK 8x8 mm**

Length of the spindle: 120 mm, 140 mm, 160 mm

**SPLIT SPINDLE PANIK 9x9 mm**

Length of the spindle 120 mm, 140 mm, 160 mm

**DISTANCE WASHER UNDER THE OUTER PLATE (thickness 1,2 mm or 2,5 mm)****SQUARED****OVAL****REVERSIBLE MECHANISM, COVER SCREWS, SPRING, REDUCTION FOR THE SPINDLE****Supplementary fitting****802 rosette****802/O EXCLUSIVE rosette****802 ASTRA rosette**

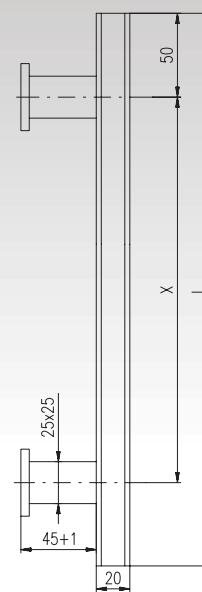
**Note:** Fittings for door thickness 38-55 mm

## Pull handle

**ALFA - stainless steel satin, black**

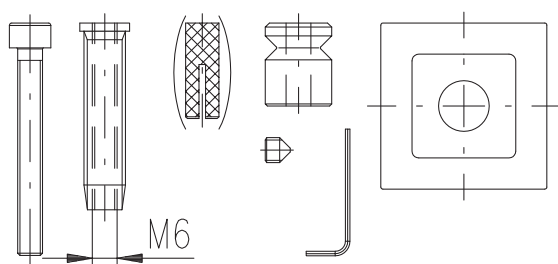
Tabulka velikosti model

celková délka "L"	rozteč "x"
330 mm	230 mm
450 mm	350 mm
600 mm	500 mm
750 mm	650 mm
900 mm	800 mm
1200 mm	1100 mm

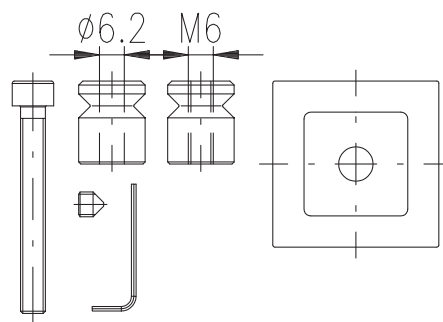


Door pull is designed to be mounted on the door using screws M6. Suitable for outdoor use. Assembly material depends on mounting options below and it is not included.

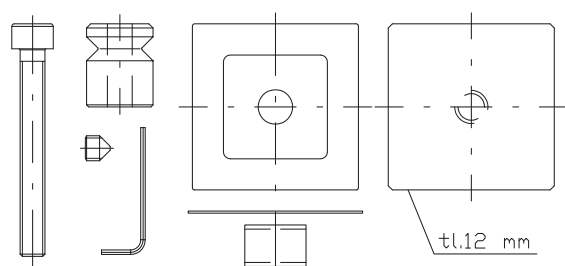
Single mounting  
under 50 mm - 5088000000  
over 50 mm - 5088010000



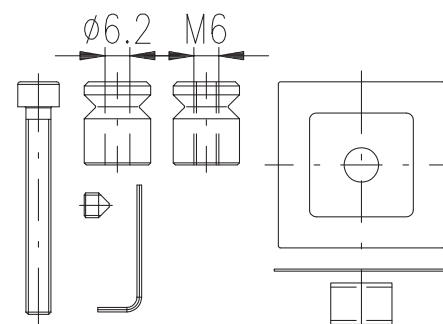
Back to back mounting  
5588020000



Single mounting - glass door  
5588030000



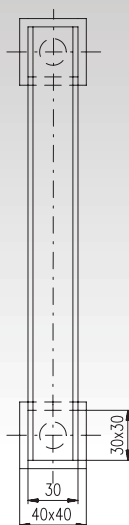
Back to back mounting - glass door  
5588040000





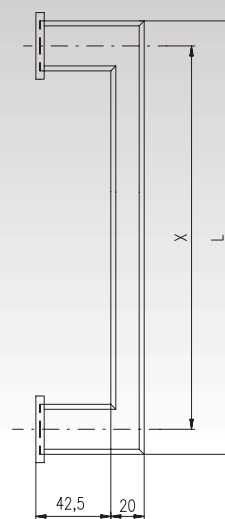
# Pull handle

## BETA - stainless steel satin, black



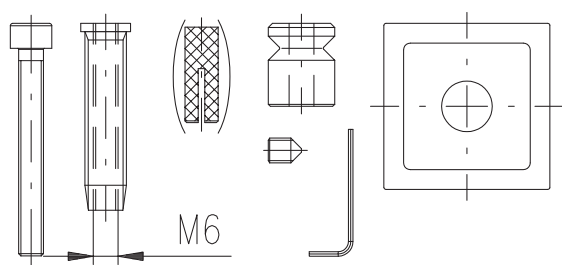
Tabulka velikostí model

celková délka "L"	rozteč "x"
260 mm	230 mm
380 mm	350 mm
530 mm	500 mm
680 mm	650 mm
830 mm	800 mm
1030 mm	1000 mm
1230 mm	1200 mm

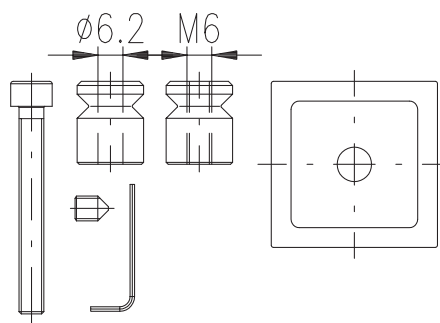


Door pull is designed to be mounted on the door using screws M6. Suitable for outdoor use. Assembly material depends on mounting option below and it is not included.

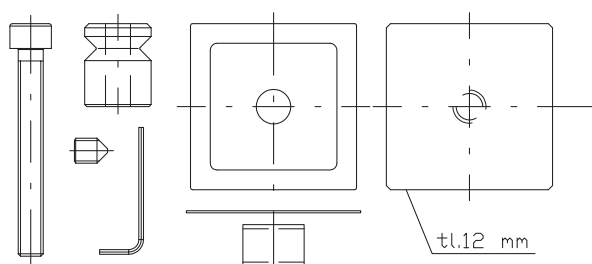
Single mounting  
under 50 mm - 5088050000  
over 50 mm - 5088060000



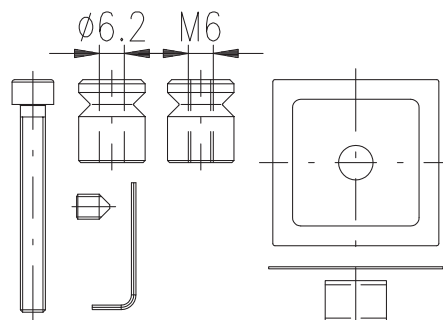
Back to back mounting  
5588070000



Single mounting - glass door  
5588080000

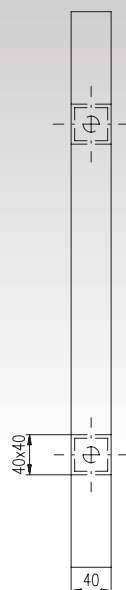


Back to back mounting - glass door  
5588090000



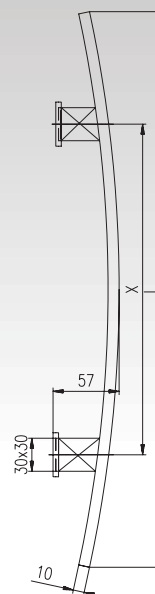
# Pull handle

## GAMA - stainless steel satin, black



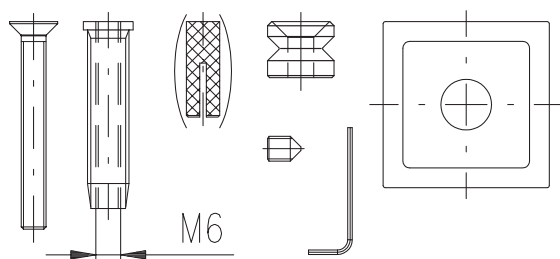
Tabulka velikostí model

celková délka "L"	rozteč "x"
550 mm	350 mm
850 mm	650 mm
1000 mm	800 mm
1200 mm	1000 mm

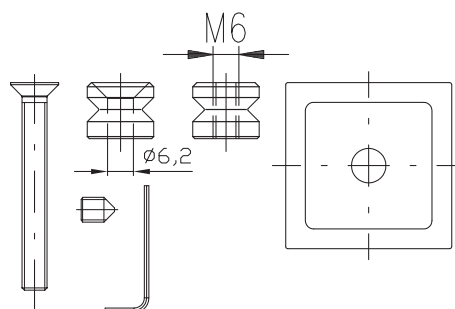


Door pull is designed to be mounted on the door using screws M6. Suitable for outdoor use. Assembly material depends on mounting options below and it is not included.

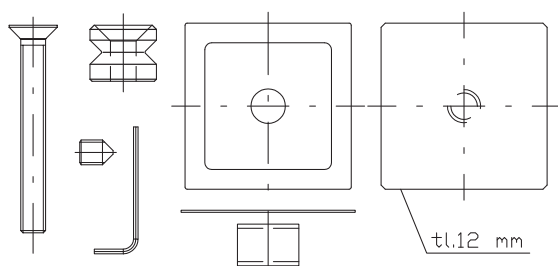
Single mounting  
under 50 mm - 5088100000  
over 50 mm - 5088110000



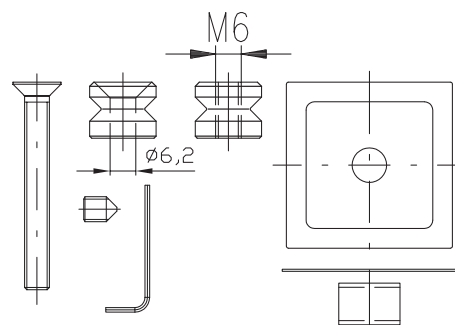
Back to back mounting  
5588120000



Single mounting - glass door  
5588130000

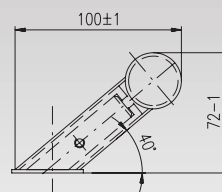


Back to back mounting - glass door  
5588140000



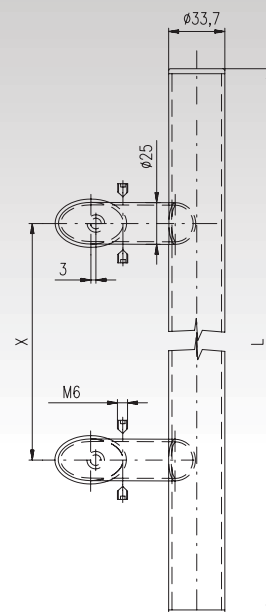
# Pull handle

## DELTA - stainless steel satin, black



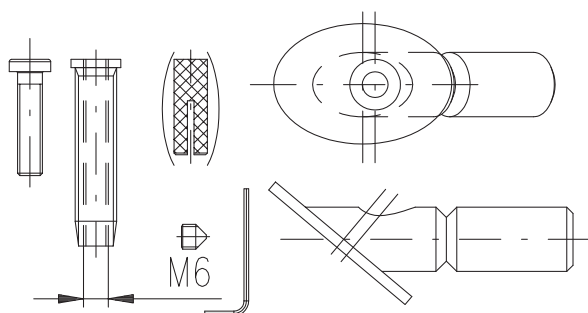
Tabulka velikostí model

celková délka "L"	rozteč "x"
300 mm	200 mm
400 mm	300 mm
500 mm	300 mm
600 mm	400 mm
800 mm	600 mm
1000 mm	700 mm
1200 mm	900 mm
1800 mm	1400 mm

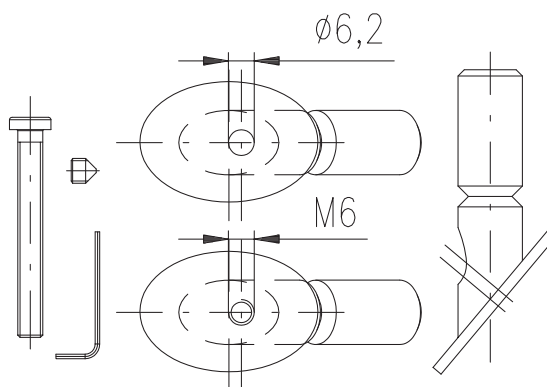


Door pull is designed to be mounted on the door using screws M6. Suitable for outdoor use. Assembly material depends on mounting options below and it is not included.

Single mounting  
under 50 mm - 5088200000  
over 50 mm - 5088210000



Back to back mounting  
5588220000



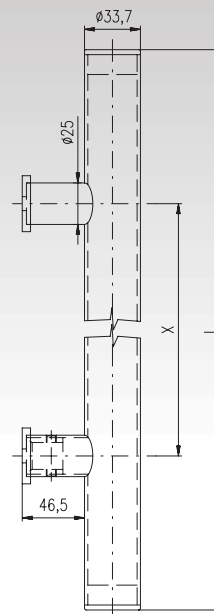
# Pull handle

## OMEGA - stainless steel satin, black



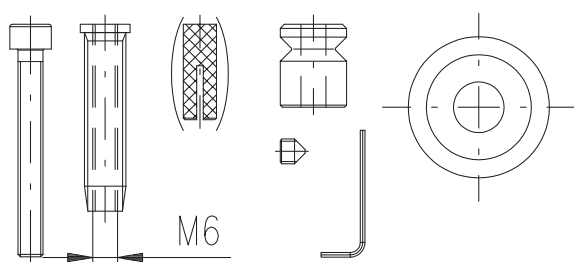
Tabulka velikostí model

celková délka "L"	rozteč "x"
400 mm	300 mm
600 mm	400 mm
800 mm	600 mm
1000 mm	700 mm
1200 mm	900 mm
1800 mm	1400 mm

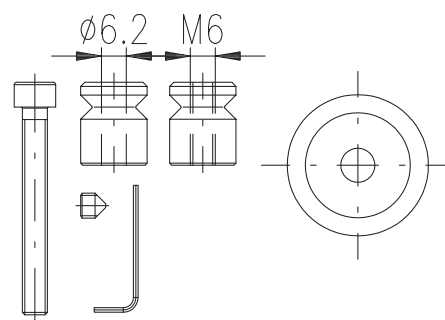


Door pull is designed to be mounted on the door using screws M6. Suitable for outdoor use. Assembly material depends on mounting options below and it is not included.

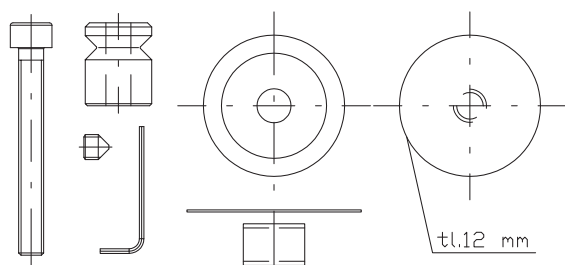
Single mounting  
under 50 mm - 5088150000  
over 50 mm - 5088160000



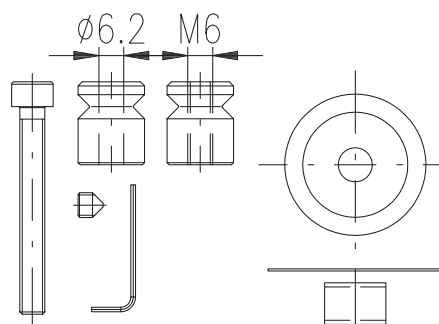
Back to back mounting  
5588170000



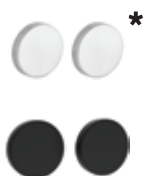
Single mounting - glass door  
5588180000



Back to back mounting - glass door  
5588190000



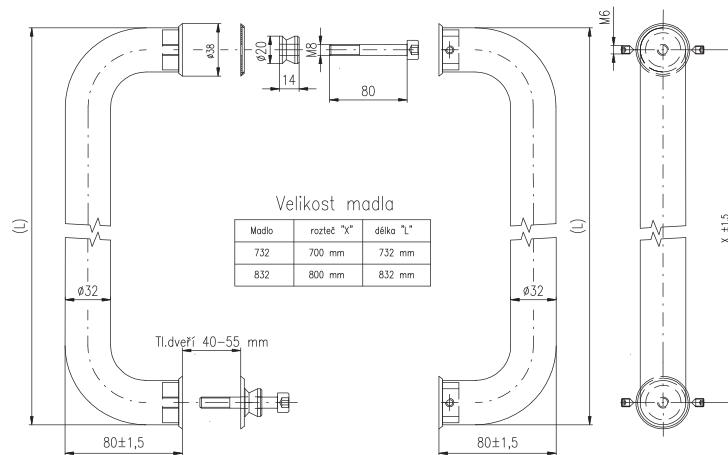
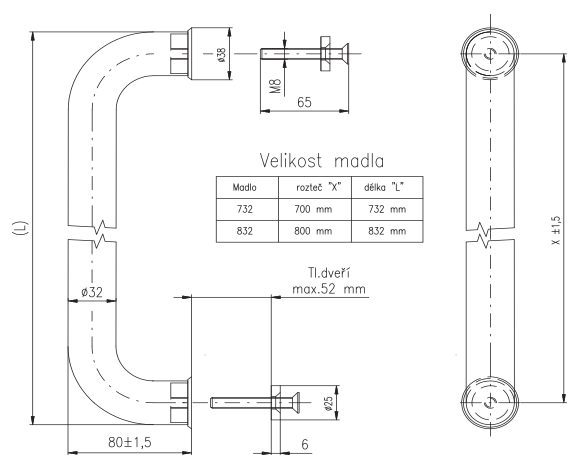
## Pull handle U



## Pull handle U - BACK TO BACK PAIR



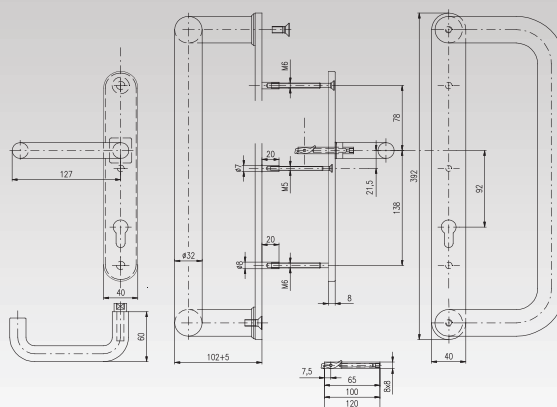
Door pull is designed to be mounted on the door using screws M8.



**\*Remark:** In order to conceal the screws the blind escutcheons are available on request

## Handles for profiled door

### PULL HANDLE G ON PLATES

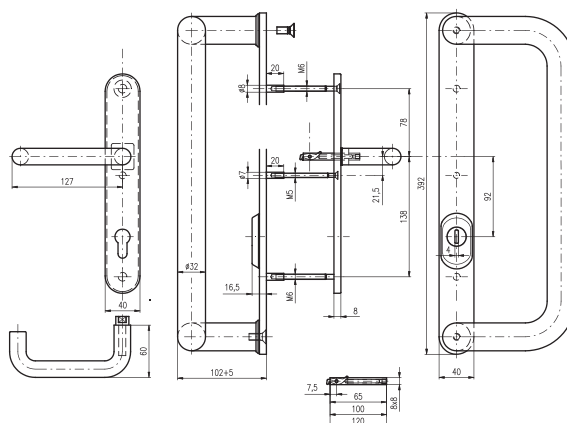


**Pitch:** 92 mm

**Door thickness:** 65-80 mm

Other variants on request.

### PULL HANDLE G ON PLATES WITH PROTECTOR



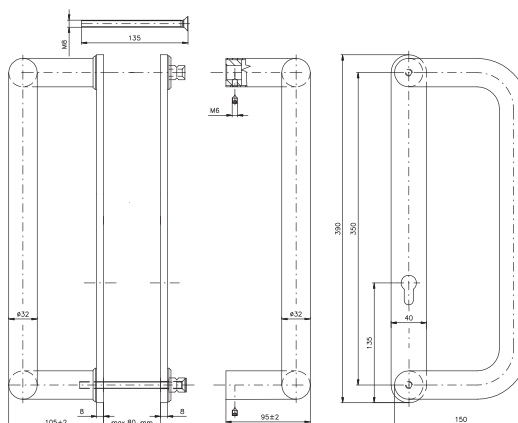
**Pitch:** 92 mm

**Door thickness:** 65-80 mm

Other variants on request.

Options with pull handles D and V on request.

### PULL HANDLE G BACK TO BACK PAIR



**Pitch:** 92 mm

**Door thickness:** 65-80 mm

Other variants on request.

# Door fitting type 850

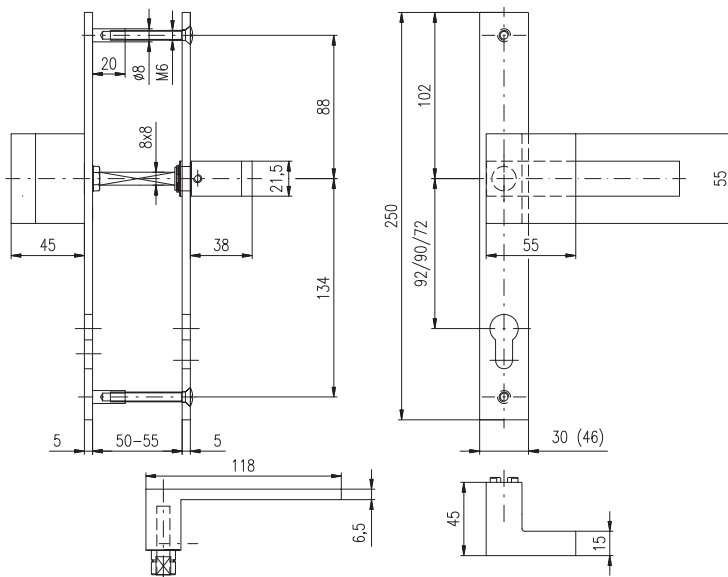
## SURIVAL/30, SURIVAL/46



**SURIVAL/30**  
handle-pull handle



**SURIVAL/46**  
handle-pull handle



**Variant:** PZ, BB

**Pitch:** 72 mm, 90 mm, 92 mm

**Door thickness:** 50-55 mm

Backplates are assembled by using screws M6 and bolts attached to the outer backplate.



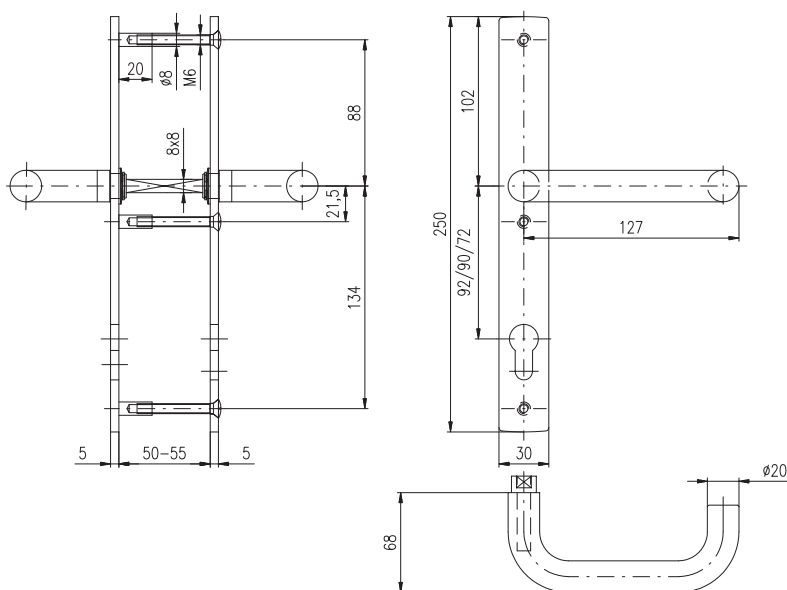
7200

INDOOR

DOOR HANDLES



## Two stainless steel door handles are shown against a white background. The handle on the left is mounted on a vertical plate and features a keyhole. The handle on the right is mounted on a similar plate but does not have a keyhole. Both handles have a curved, ergonomic design.



**Door thickness:** 50-55 mm

Backplates are assembled by using screws M6 and bolts attached to the outer backplate.

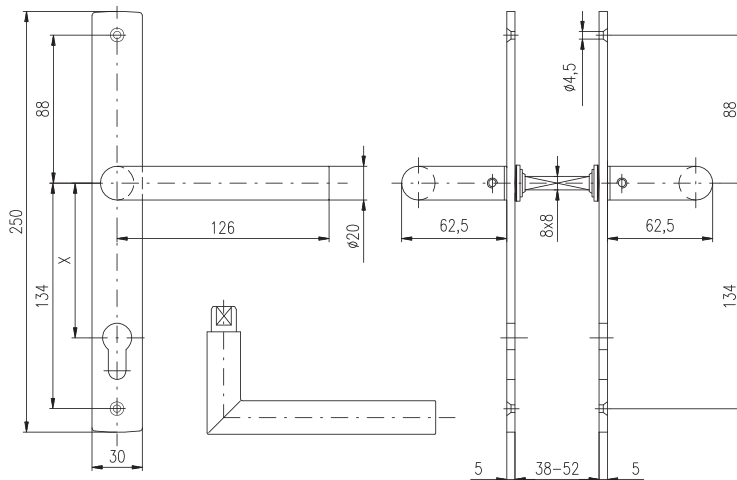




# Door fitting type 850 MONZUN



**MONZUN**  
handle-pull handle



**Variant:** PZ, BB

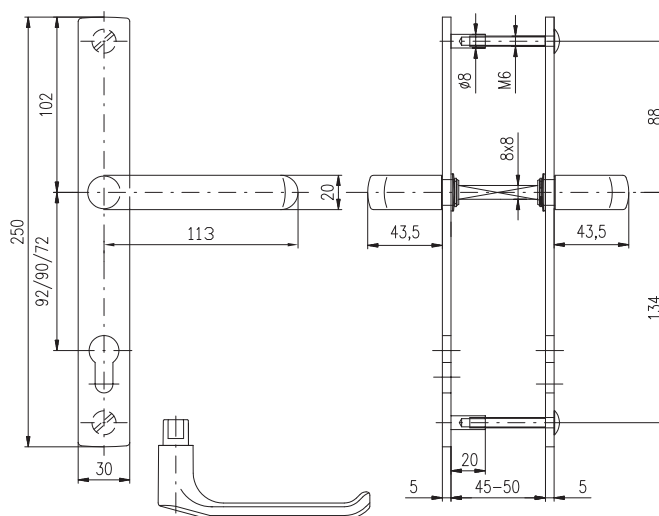
**Pitch:** 72 mm, 90 mm, 92 mm

**Door thickness:** 38-52 mm

Backplates are installed with wood screws.



7200



**Door thickness:** 45-50 mm

Backplates are assembled by using screws M6 and bolts attached to the outer backplate.



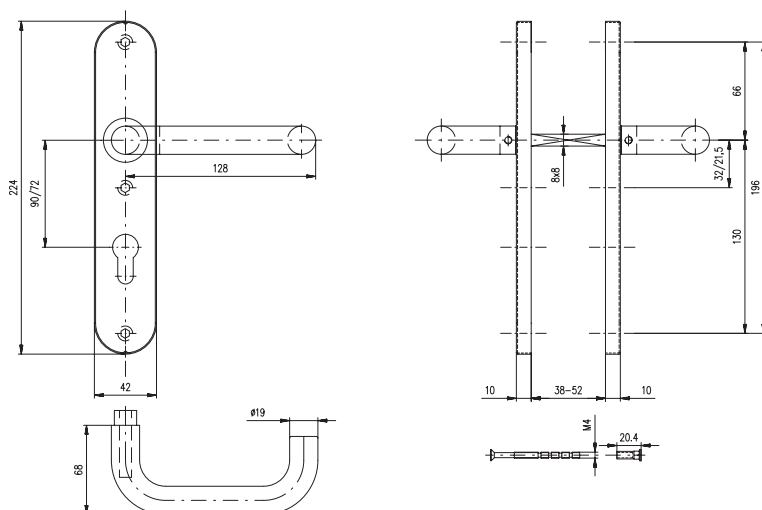
# PERUN stainless steel satin



**PERUN handle-knob**



**PERUN handle-handle WC**



**Variant:** BB, PZ, WC

**Pitch:** 72 mm, 90 mm, 92 mm

**Door thickness:** 38-52 mm

Stainless steel handles and covering plates. Steel underconstruction. Each handle is firmly attached to the plate. Spring loaded handles on both sides.



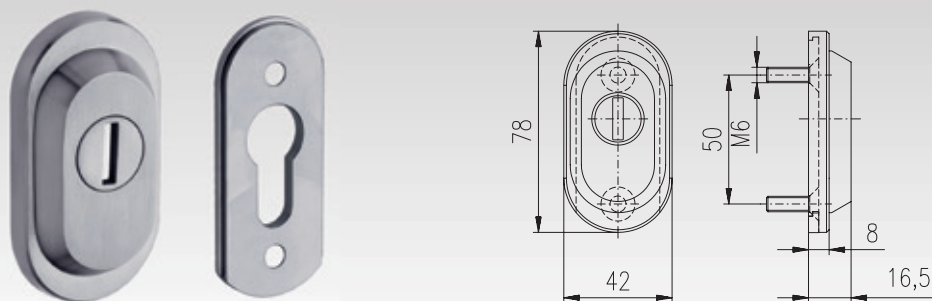
7200

INDOOR

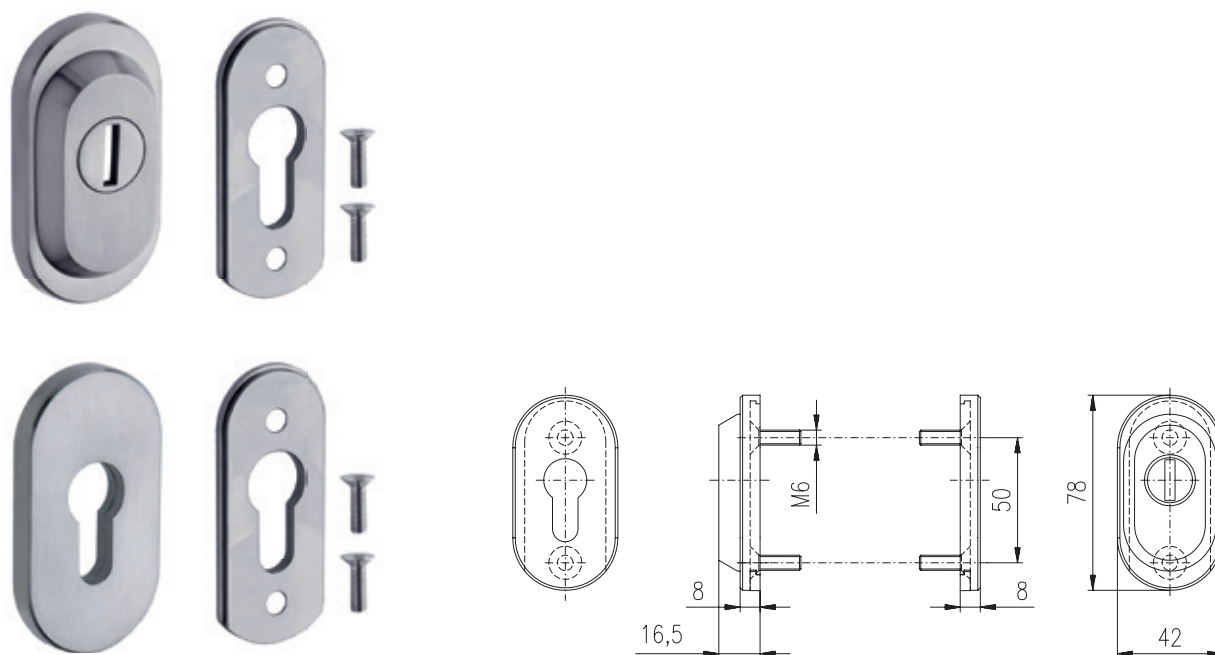
DOOR HANDLES

# SECURITY ESCUTCHEON RS/O

## Security escutcheon RS/O single mounting (3140467200)



## Security escutcheon RS/O Back to back pair (3140547200)



Suitable for aluminium entrance doors.

Included fixing screws M6x20.

Cylinder must not protrude above the door surface more than 10 mm.

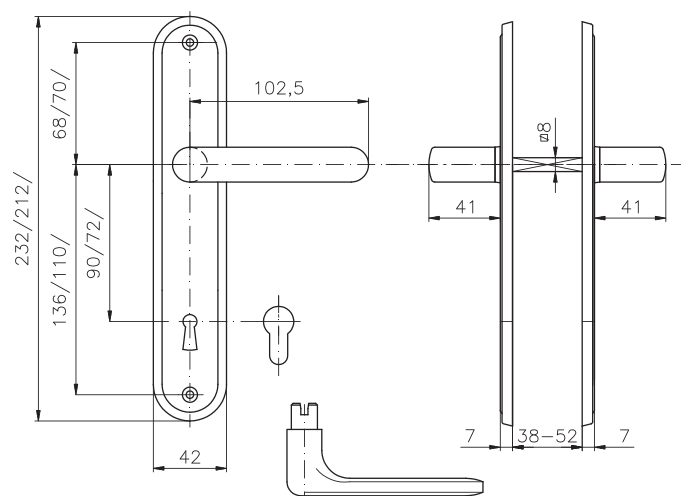


7200

# EXCLUSIVE



knob



**Variant:** BB, PZ, WC

**Pitch:** 72 mm, 90 mm

**Door thickness:** 38-52 mm

Option with knob available.



**BRIT**  
stainless steel satin



**PROFIO**  
stainless steel satin



**WC**



**SIESTA**  
stainless steel satin

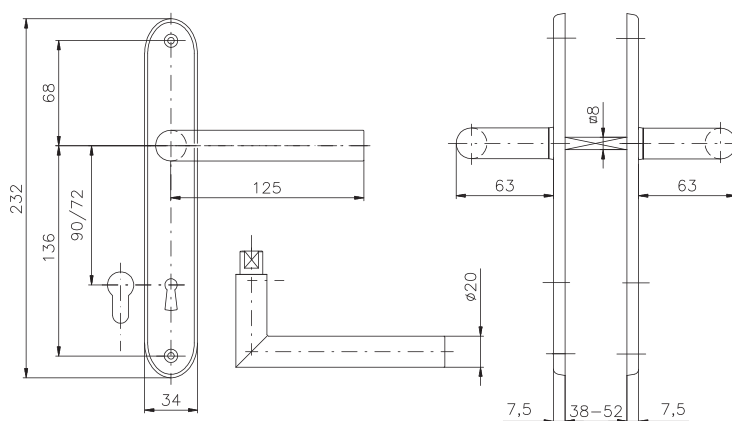


**MONET WC**

## MONET



**knob**



**Variant:** BB, PZ, WC

**Pitch:** 72 mm, 90 mm

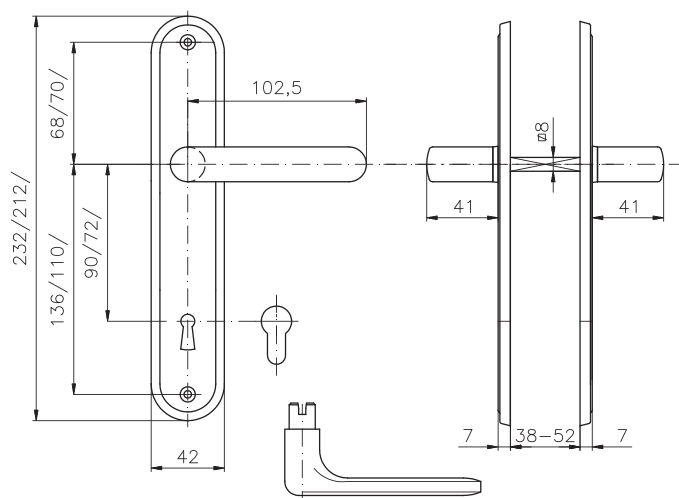
**Door thickness:** 38-52 mm

Option with knob available.

# EXCLUSIVE



knob



**Variant:** BB, PZ, WC

**Pitch:** 72 mm, 90 mm

**Door thickness:** 38-52 mm

Option with knob available



IDEAL



ELEGANT



KLASIK



REAL



WC

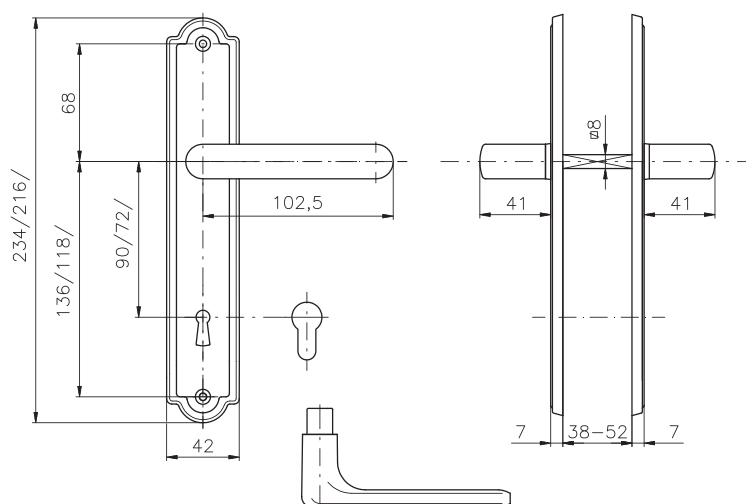


INDOOR

DOOR HANDLES

**ADRIA****ATLANTIS****TOSKA****VIKTORIA****WC**

## GRACIE

**knob****Variant:** BB, PZ, WC**Pitch:** 72 mm, 90 mm**Door thickness:** 38-52 mm

Option with knob available.

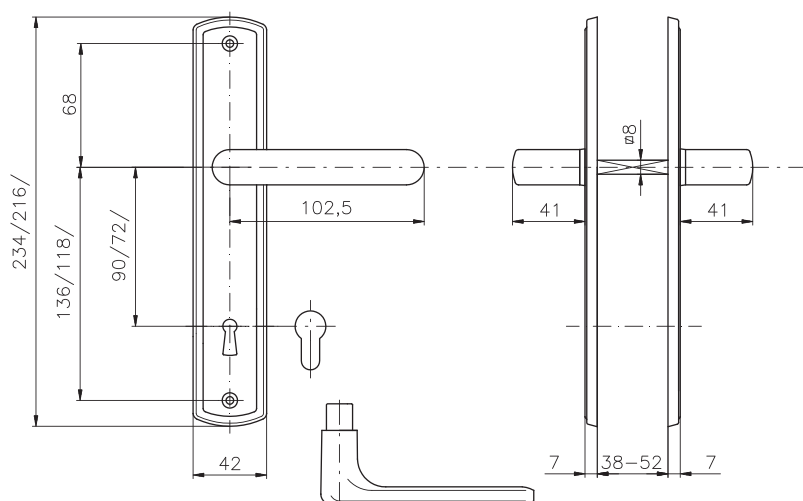


0100

8000



# PROFIO



**Variant:** BB, PZ, WC

**Pitch:** 72 mm, 90 mm

**Door thickness:** 38-52 mm

Option with knob available.



**KREDO**



**TERNO**



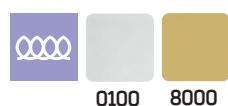
**STRATO**



**PREMIO**



**WC**

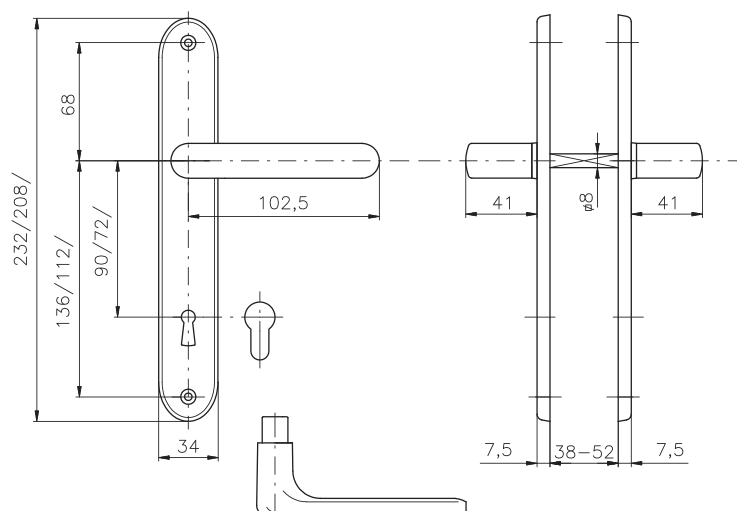


INDOOR

DOOR HANDLES

**SONET****SILUET****WC**

## SIESTA

**knob**

**Variant:** BB, PZ, WC

**Pitch:** 72 mm, 90 mm

**Door thickness:** 38-52 mm

Option with knob available.



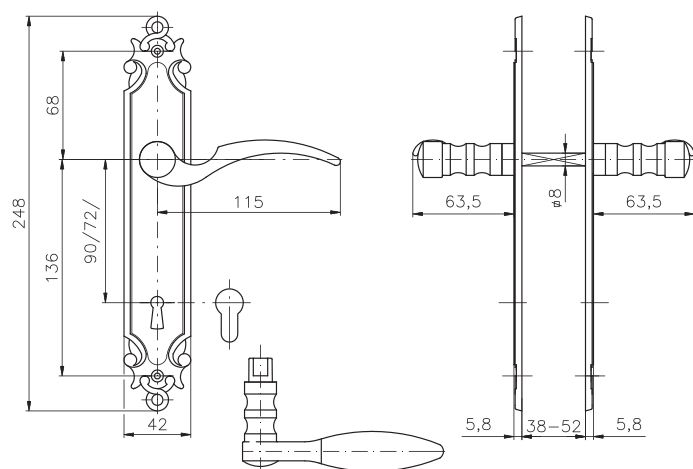
0100

8000

# ROMANCE



HARMONIE



**Variant:** BB, PZ

**Pitch:** 72 mm, 90 mm

**Door thickness:** 38-52 mm

**Finish:** Ti - veneer

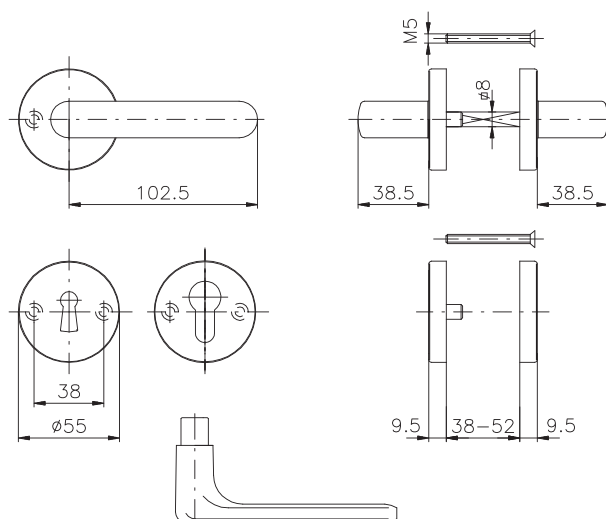


**BRIT/SNH**  
stainless steel satin

## EXCLUSIVE/SNH



**knob**

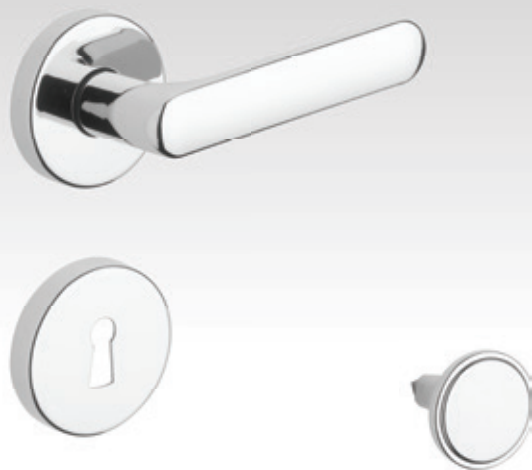


**Variant:** BB, PZ, WC

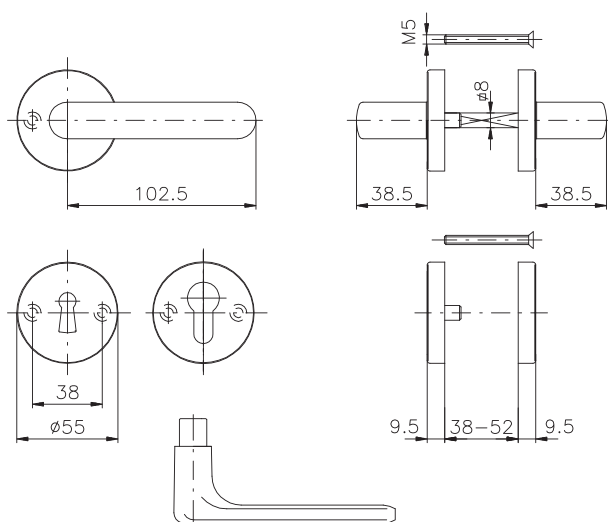
**Door thickness:** 38-52 mm

Option with knob available.

## EXCLUSIVE/SNH



knob



**Variant:** BB, PZ, WC

**Door thickness:** 38-52 mm

Option with knob available.



ELEGANT/SNH



IDEAL/SNH



KLASIK/SNH



REAL/SNH

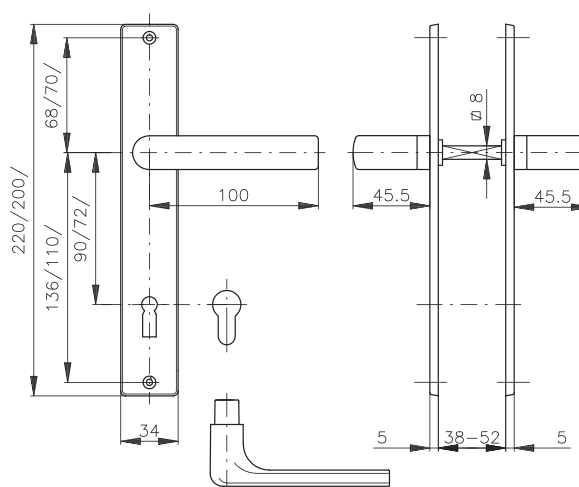


WC



**804 WC**

## 804 handle-handle

**knob**

**Variant:** BB, PZ, WC

**Pitch:** 72 mm, 90 mm

**Door thickness:** 38-52 mm

Option with knob available.



0100

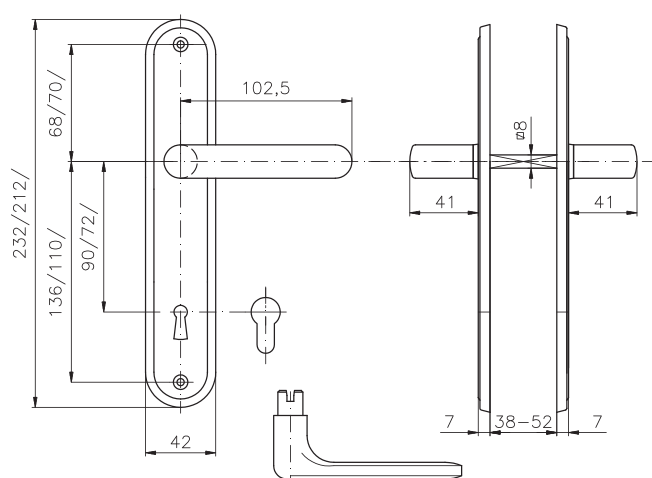
## EXCLUSIVE handle-handle



knob



EXCLUSIVE WC



**Variant:** BB, PZ, WC

**Pitch:** 72 mm, 90 mm

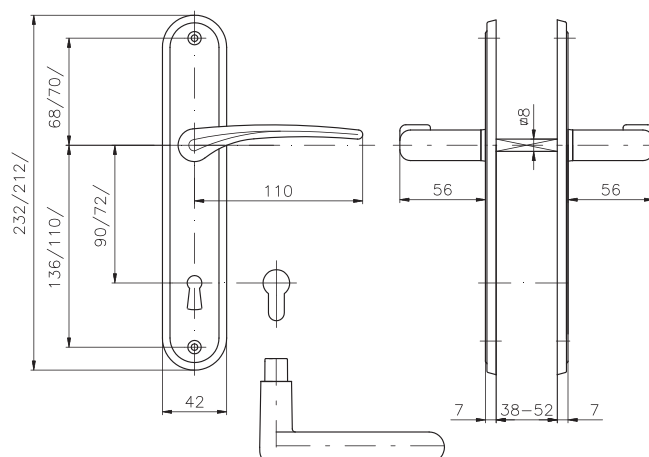
**Door thickness:** 38-52 mm

Option with knob available



**IDEAL WC**

## IDEAL handle-handle

**knob**

**Variant:** BB, PZ, WC

**Pitch:** 72 mm, 90 mm

**Door thickness:** 38-52 mm

Option with knob available.



0100

8000



# PANIC FITTING

Compatible with wide range of panic mortise locks.

## BORA/8 (included split spindle) with reversible mechanism

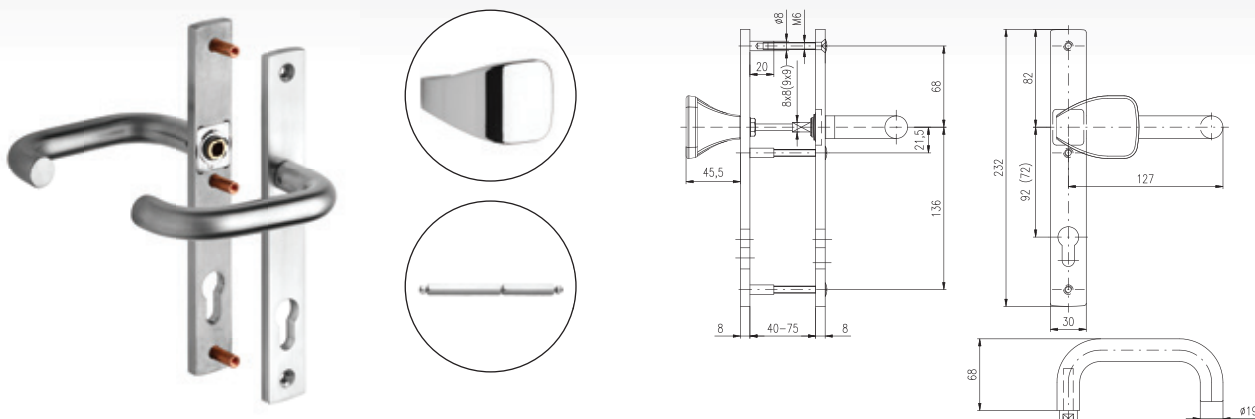
**Variant:** left, right

**Pitch:** 72 mm, 92 mm

**Door thickness:** 40-75 mm

Included split spindle 8x8 and spindle reduction 9x9 mm (reduction 10x10 mm on request), two reversible mechanisms if handle-handle option.

### LEVER HANDLE-LEVER HANDLE



## BORA/5 (included split spindle) without reversible mechanism

**Variant:** left, right

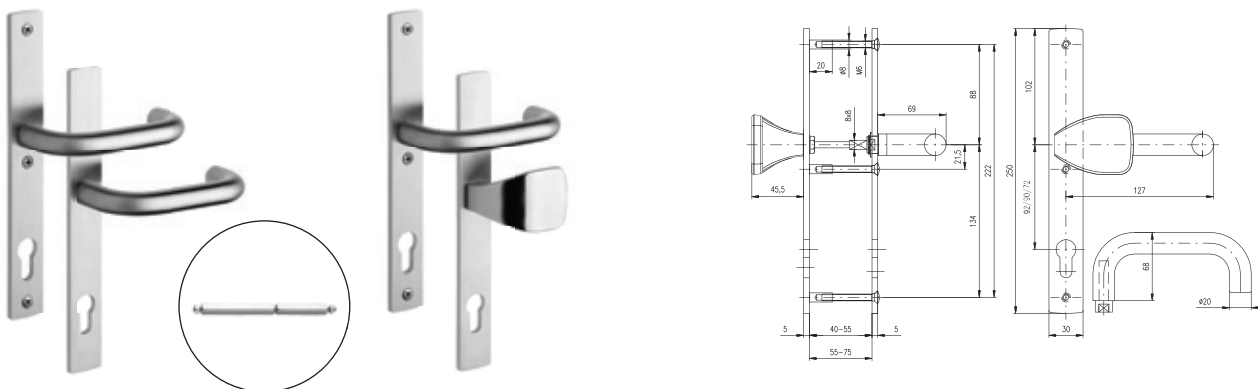
**Pitch:** 72 mm, 92 mm

**Door thickness:** 55-75 mm

Included split spindle 8x8 (spindle reductions 9x9 and 10x10 mm on request), without reversible mechanism.

### HANDLE-HANDLE

### HANDLE-PULL HANDLE



DIN EN 179



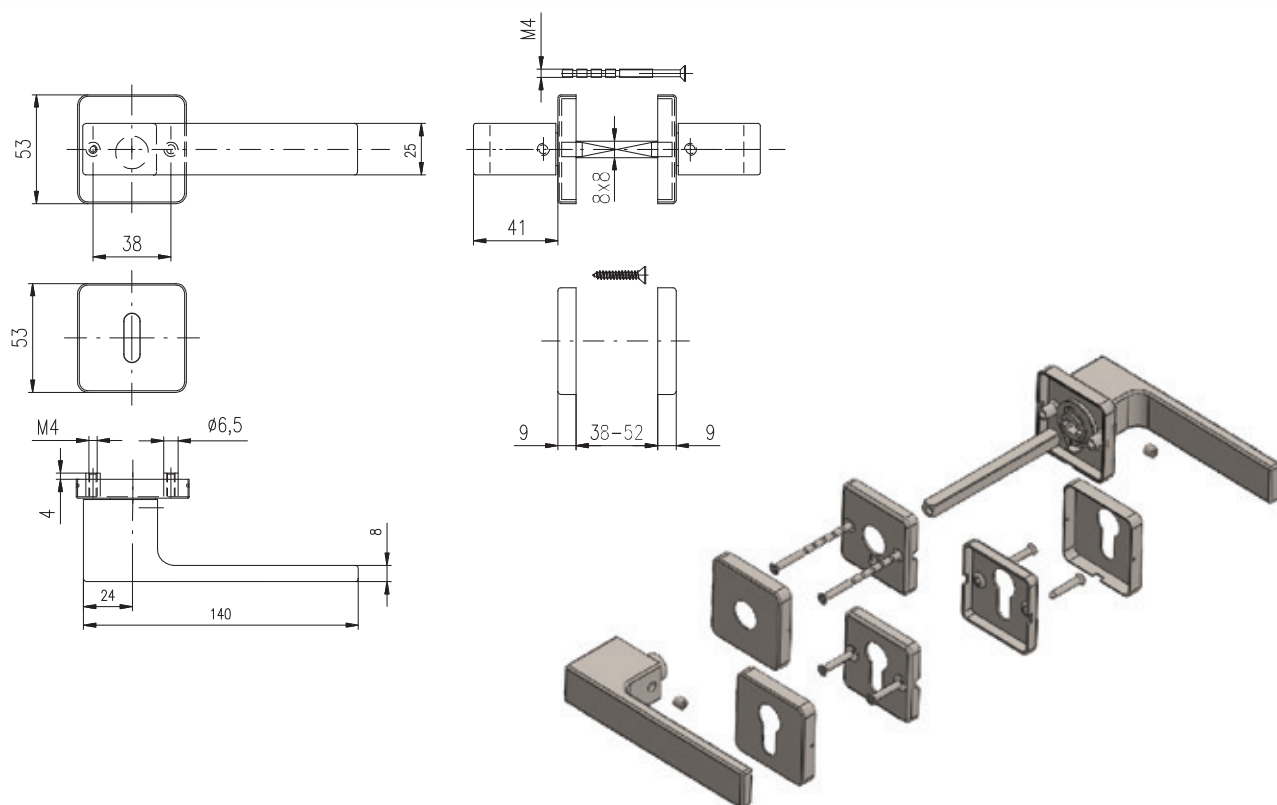
7200

# Door handles - ECONOMY LINE

## square - DESIGN/H

- Material stainless steel
- Concealed steel under roses
- Classification acc. to EN 1906
- Stainless steel fasteners
- Door thickness 38-52 mm
- Included reversible spring
- Metal bolts diam. 6,5 attached to underose

### Z Design with fixing metal attachments



**CASTELO/H**



**CASTELO/H black**



**DANTE/H**





**DANTE/H black**



**EMONT/H**



**WC escutcheons DESIGN/H**



**EMONT/H black**



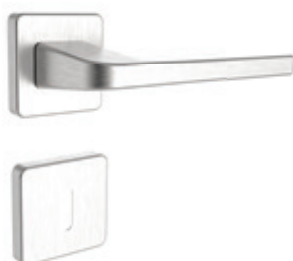
**FONDI/H**



**WC escutcheons DESIGN/H  
black**



**FONDI/H black**



**PORTO/H**



**WC escutcheons DESIGN/H  
white**



**PORTO/H black**



**RAVENA/H**



**Escutcheons DESIGN/H**



**Escutcheons DESIGN/H  
black**



**RAVENA/H black**



**RAVENA/H white**



**Escutcheons DESIGN/H  
white**



**RAVENA/H anthracite**



**SAVONA/H**



**K5 knob DESIGN/H**



**SAVONA/H black**



**VICENZA/H**



**VICENZA/H black**



**ROSANO/H**

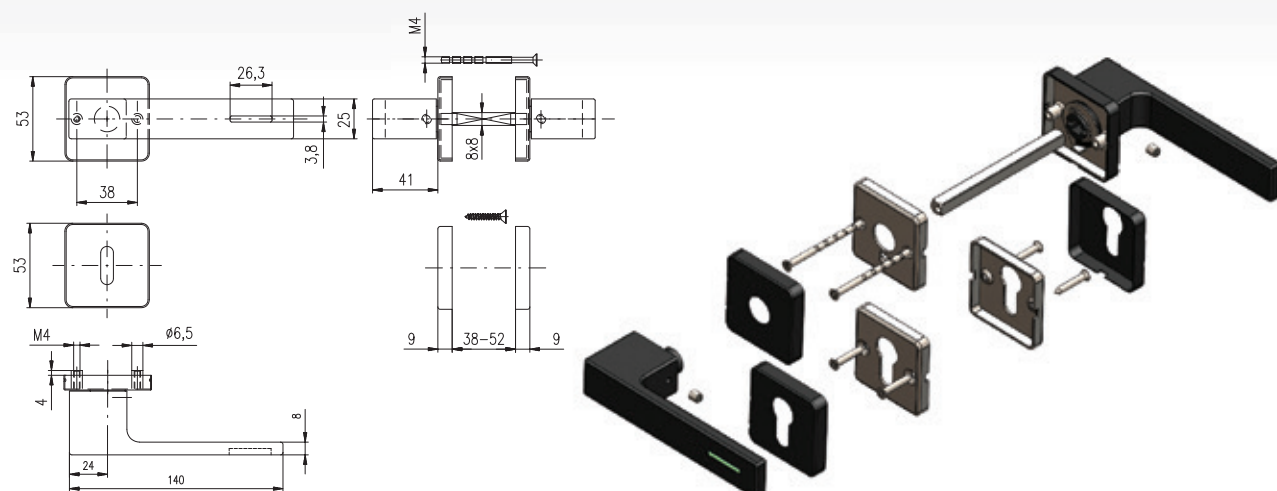


# Door handles - ECONOMY LINE

## square - DESIGN/H LUMINO

- Lumino handles incorporate glass capillary filled with tritium gas
- Material stainless steel
- Concealed steel under roses
- Classification acc. to EN 1906
- Stainless steel fasteners
- Door thickness 38-52 mm (WC version - door thickness 38-43 mm)
- Included reversible spring
- Self-luminous lever handle
- Visible up to 15 m in the dark
- Maintenance-free, without external energy source
- 15 years of operation life
- Suitable for outdoor use

### Z Design with fixing metal attachments



**RAVENA/H LUMINO black**



**WC escutcheons black**



**FONDI/H LUMINO black**

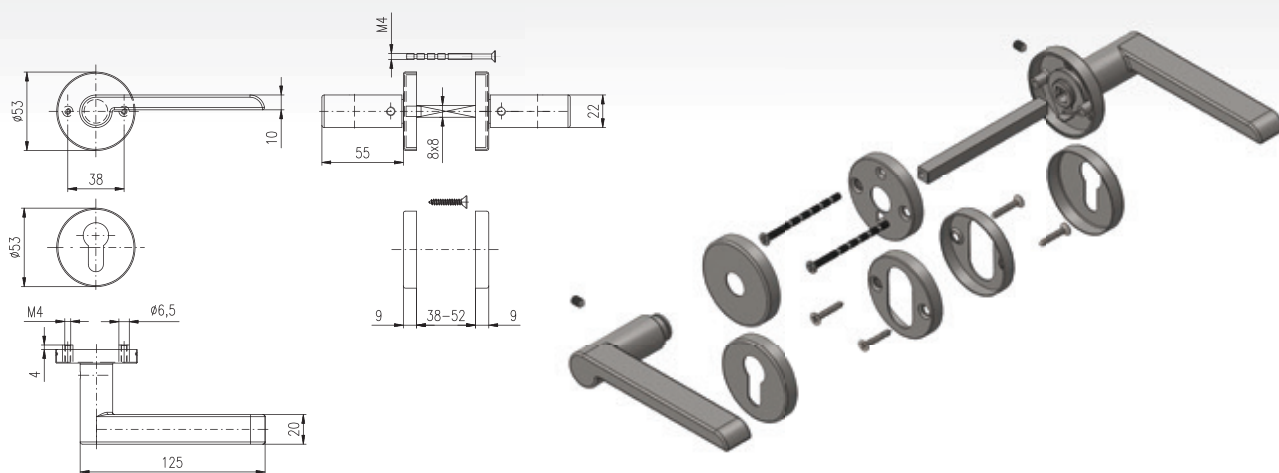


**Escutcheons black**

## Door handles - ECONOMY LINE round - DESIGN/N

- Material stainless steel
- Concealed steel under roses
- Classification acc. to EN 1906
- Stainless steel fasteners
- Door thickness 38-52 mm
- Included reversible spring

### Z Design with fixing metal attachments



**WC escutcheons round  
DESIGN/N**



**Round escutcheons  
DESIGN/N**



**K3 knob DESIGN/H**



**SOLDA/N**



**SOLDA/N black**



**MESINA/N**



**MESINA/N black**



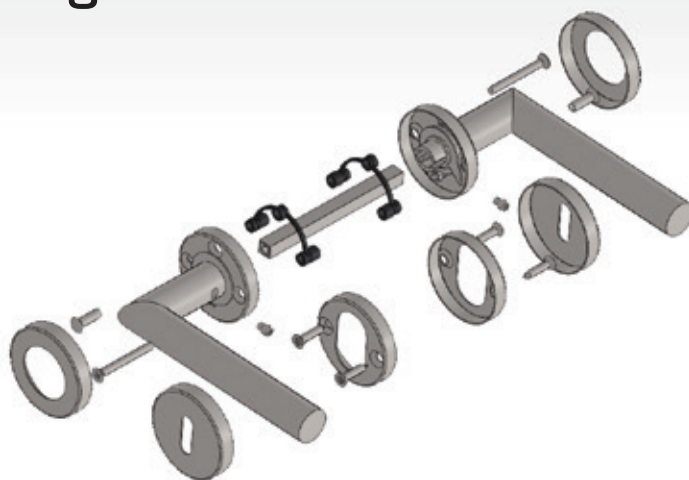
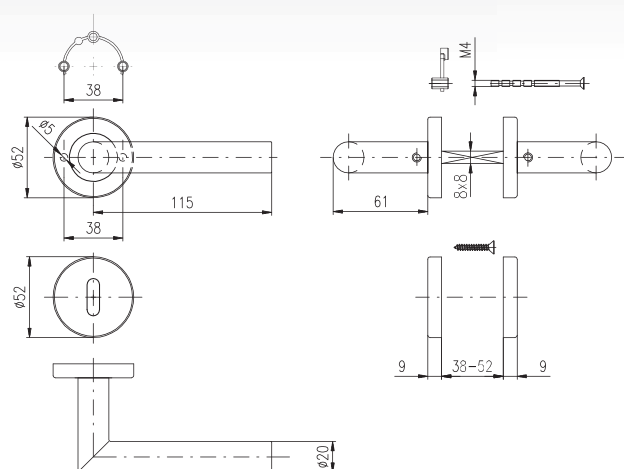
# Door handles - ECONOMY LINE

## round rose

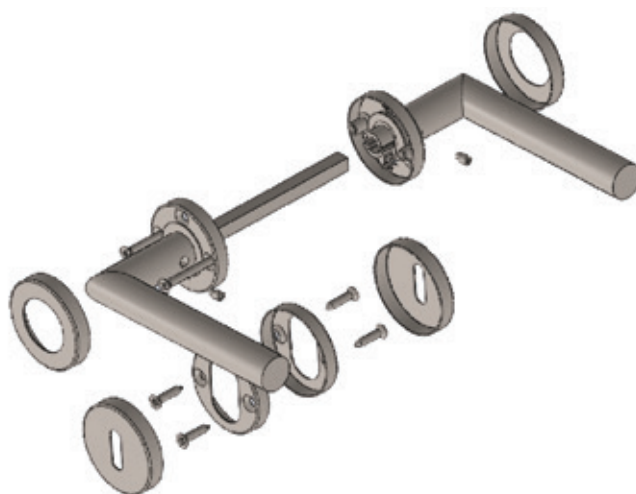
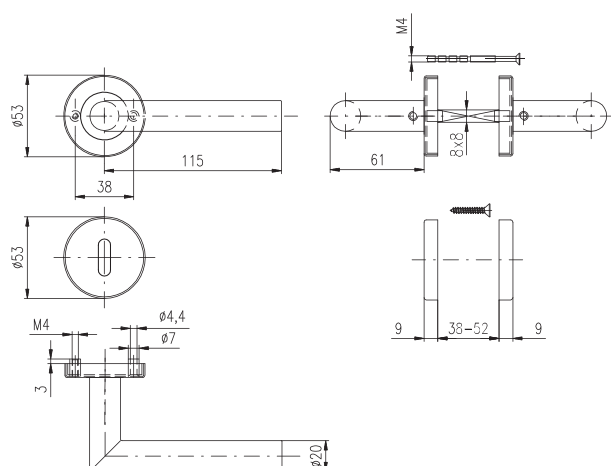
- Material stainless steel
- Concealed steel under roses
- Classification acc. to EN 1906
- Stainless steel fasteners
- Door thickness 38-52 mm
- Included reversible spring



### Design with plastic fixing inserts



### Design with fixing metal attachments





**WC escutcheons round**



**ALBACETE**



**ALBACETE - for greater loading**



**with metal bolts**



**Round escutcheons**



**BERGAMO**



**BERGAMO**



**with metal bolts**



**BOLZANO**



**with metal bolts**



**CORNO**



**with metal bolts**



**CORTINA**



**with metal bolts**



**FERARA**







### MILANO



with metal bolts



### NAPOLI



**K1**  
ball knob on rose



### PALERMO



with metal bolts



### PARMA



**K2**  
round knob on rose



### VIGO



### VIGO



with metal bolts



**K6**  
ball knob on rose



**K8**  
knob-knob - fixed or moving

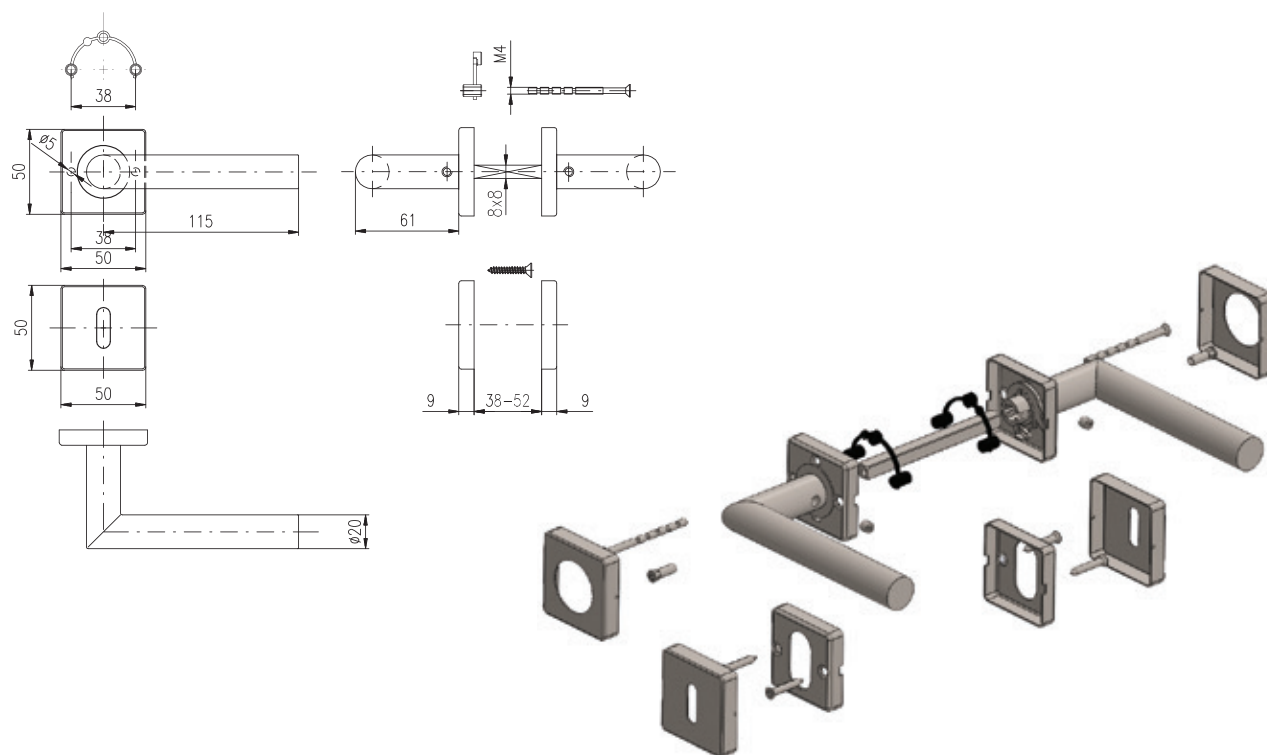
# Door handles - ECONOMY LINE

## square rose

- Material stainless steel
- Concealed steel under roses
- Classification acc. to EN 1906
- Stainless steel fasteners
- Door thickness 38-52 mm
- Included reversible spring



Design with plastic fixing inserts



**BOLOGNA/H**



**MANDELO/H**



**MARSIA/H**





**MILANO/H**



**PARMA/H**



**WC escutcheons**



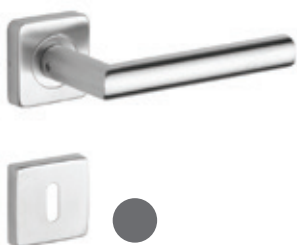
**TORINO/H**



**TREVISO/H**



**Square escutcheons**



**VIGO/H**

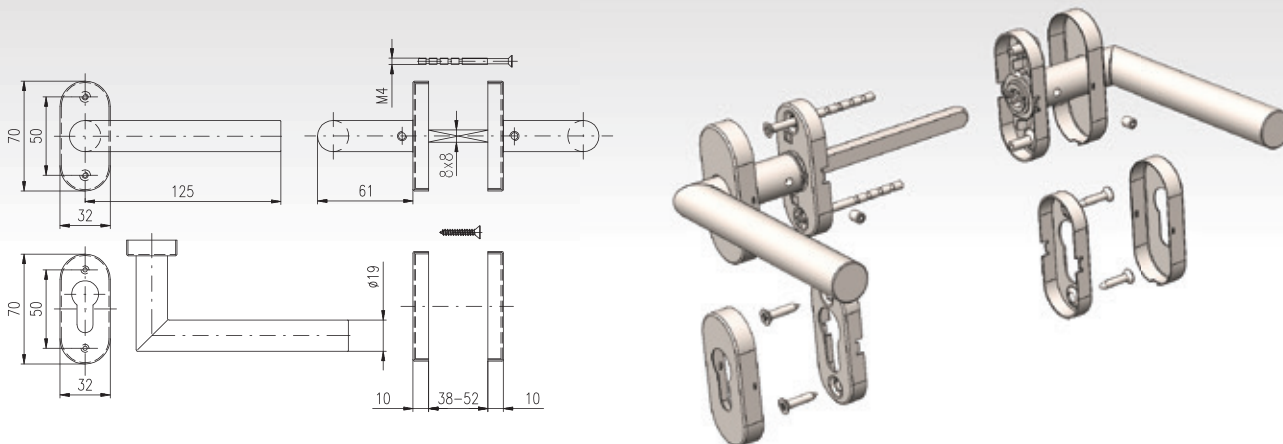


**K4  
knob on rose**

# Door handles - ECONOMY LINE

## oval

- Material stainless steel
- Concealed steel under roses
- Classification acc. to EN 1906
- Stainless steel fasteners
- Door thickness 38-52 mm
- Included reversible spring



**Oval escutcheons**



**ALBACETE oval**



**VIGO oval**

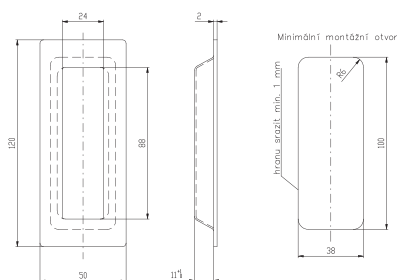


**Knob oval**

# Sliding door handles - ECONOMY LINE flush pull handles

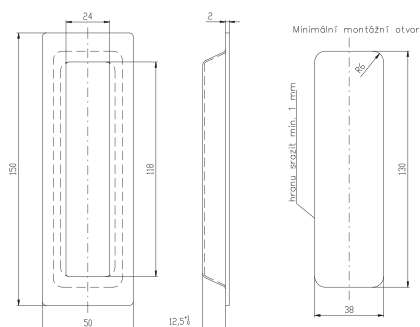
## RECTANGULAR

**Size:** 120 mm



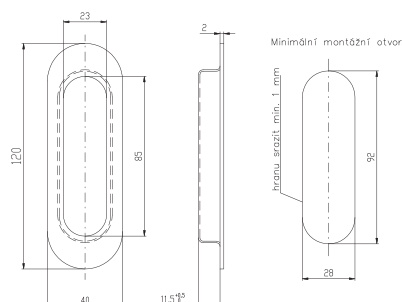
## RECTANGULAR

**Size:** 150 mm



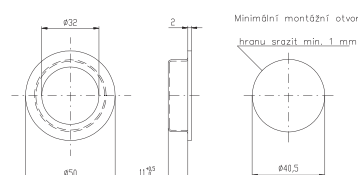
## OVAL

**Size:** 120 mm



## ROUND

**Size:** Ø 50 mm



# SIGN PLATES

## ROUND

**Size:** Ø75 mm

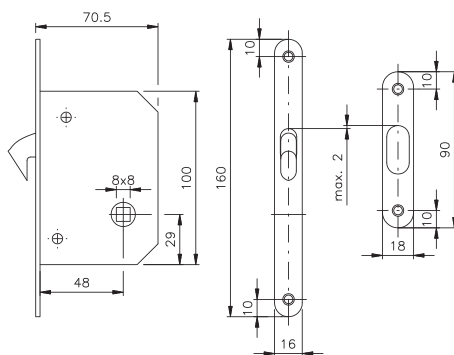


## SQUARE

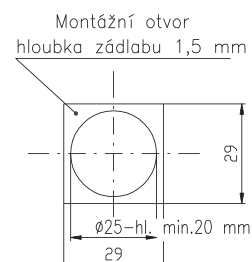
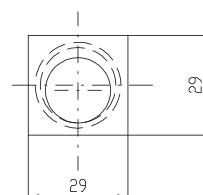
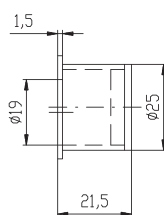
**Size:** 80 x 80 mm



# MORTISE LOCK FOR SLIDING DOORS



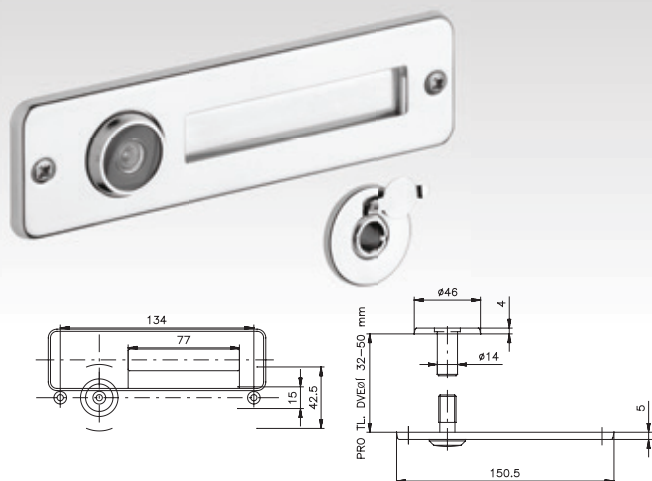
# FINGER PULL



# ACCESSORIES

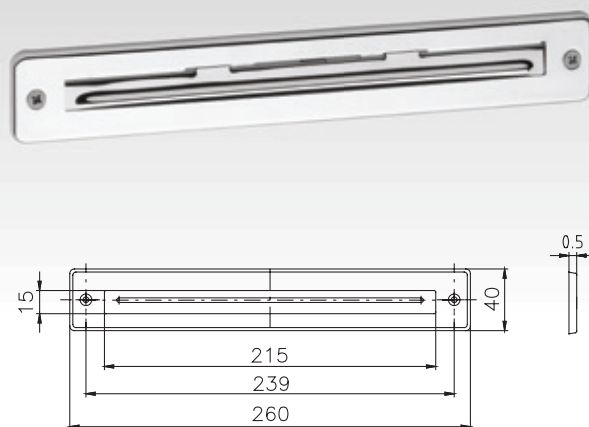
## DOOR VIEWER WITH NAME PLATE

**Application:** provide you with the opportunity to see who is standing at the door without having to open it

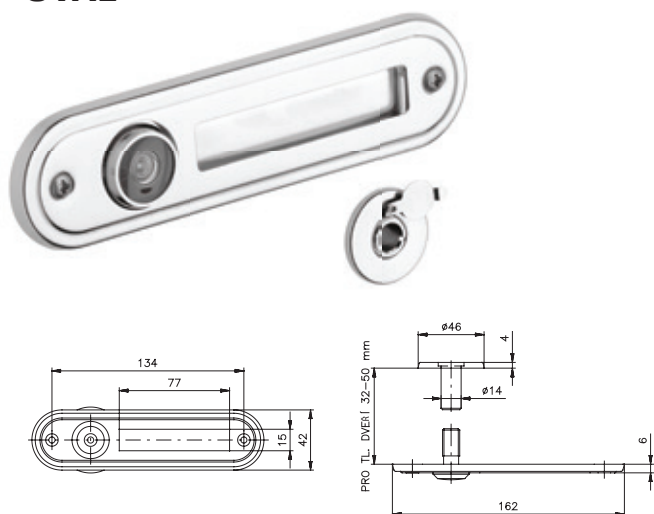


## LETTER BOX

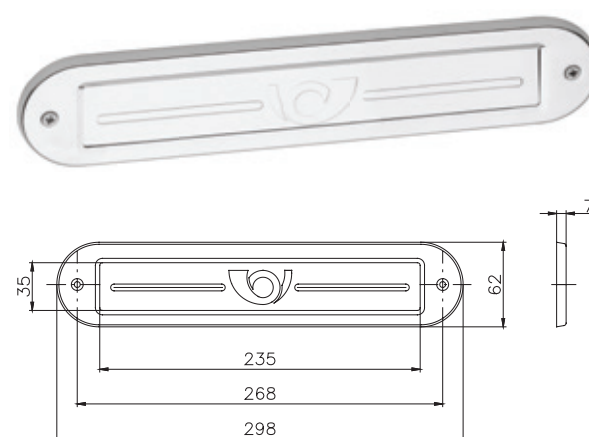
**Application:** for entrance doors, atypical mail boxes



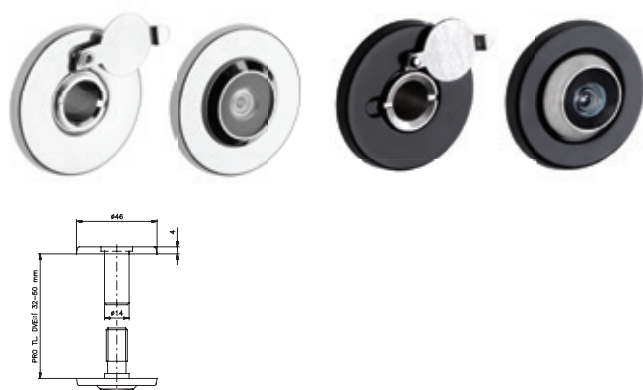
## DOOR VIEWER WITH NAME PLATE OVAL



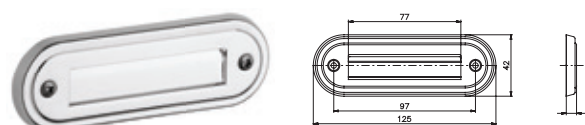
## LETTER BOX OVAL SHAPE



## DOOR VIEWER



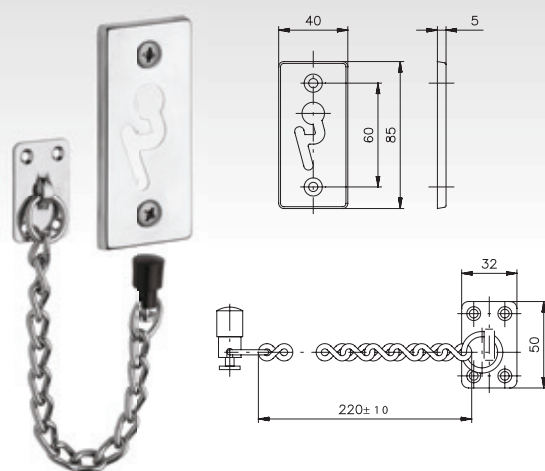
## NAME PLATE ROUND



## ACCESSORIES

### PLATE 85 WITH CHAIN

**Application:** provide you the opportunity to open the door just a crack at first before anyone can enter directly

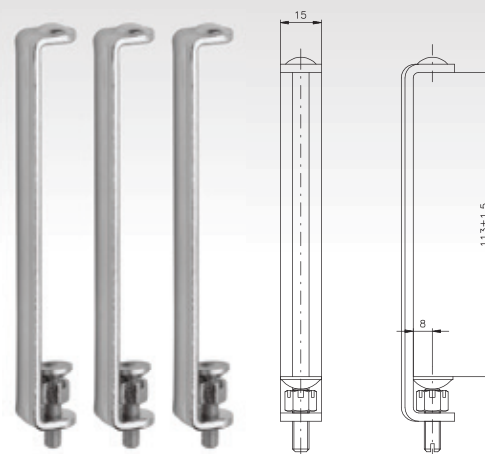


### DOOR HINGE CATCH

**Application:** to prevent attempt to hinges, against forced unhinging of doors.

Set consists of three pieces

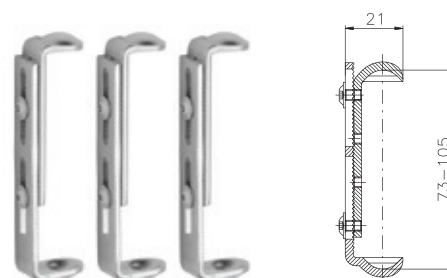
**Finish:** Zn / colour



### PLATES FOR CYLINDER



### DOOR HINGE CATCH UNIVERSAL

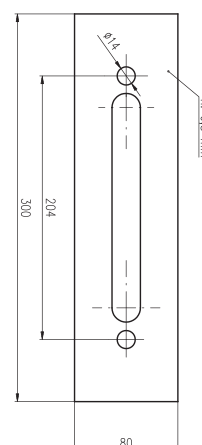
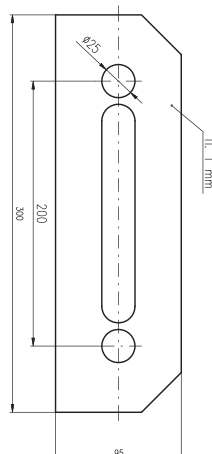
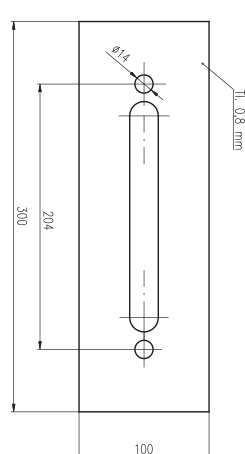


### UNDERLAY PLATE FOR SECURITY FITTINGS

- width 100 mm

- width 95 mm

- width 80 mm

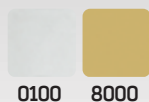


0100



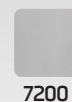
# ACCESSORIES

## ROUND DOOR STOP



## DOOR STOP K1

Size: Ø30 mm



## PROTECTIVE SHEETS THICKNESS 0,8 mm

- sizes according to specification



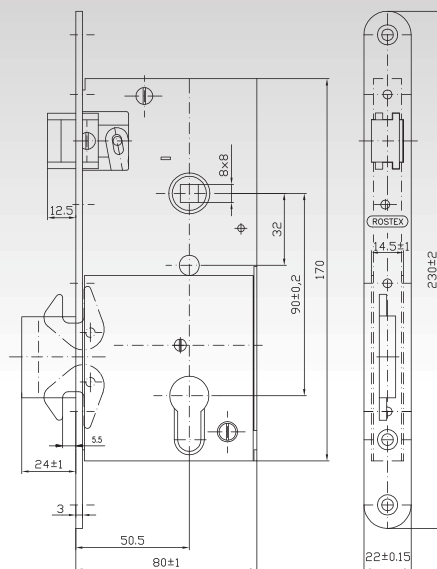
# Mortise LOCKS



**bar lock with hooks**

**Finish:** Zn

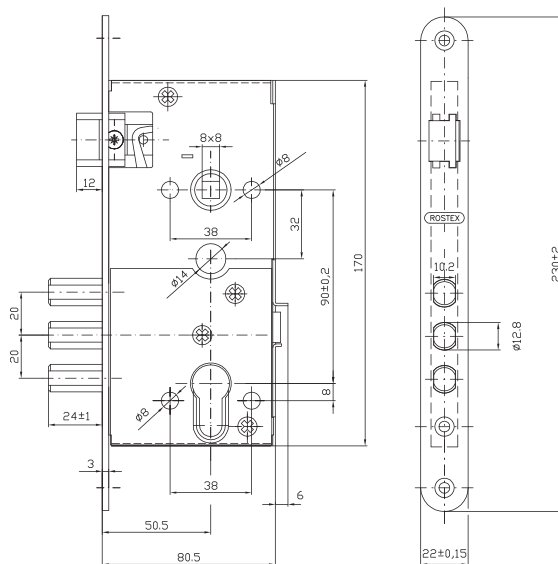
**Variant:** Universal - L, R  
product no. 4858001100



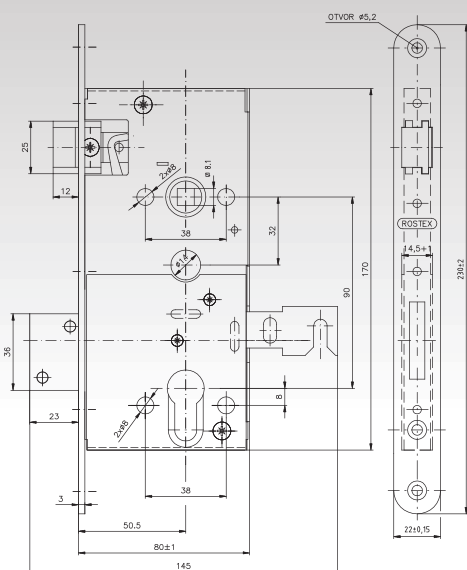
**bolt lock**

**Finish:** Zn

**Variant:** Universal - L, R  
product no. 4858230100



# Mortise LOCKS for security doors



**Finish:** Zn

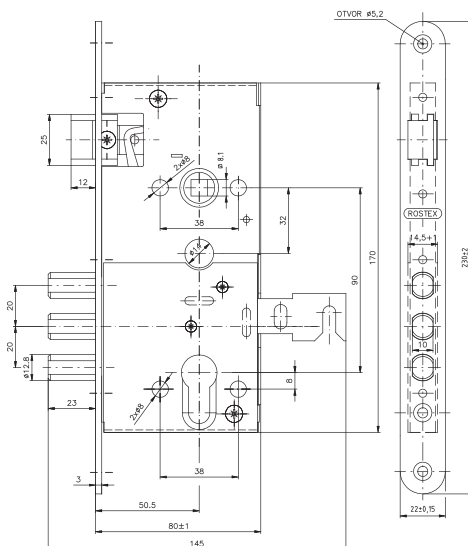
**Variant:** Left or Right, fireproof

Left: product no. 4858260300

Right: product no. 4858260200



**bar lock  
for security doors**



**Finish:** Zn

**Variant:** Left or Right, fireproof

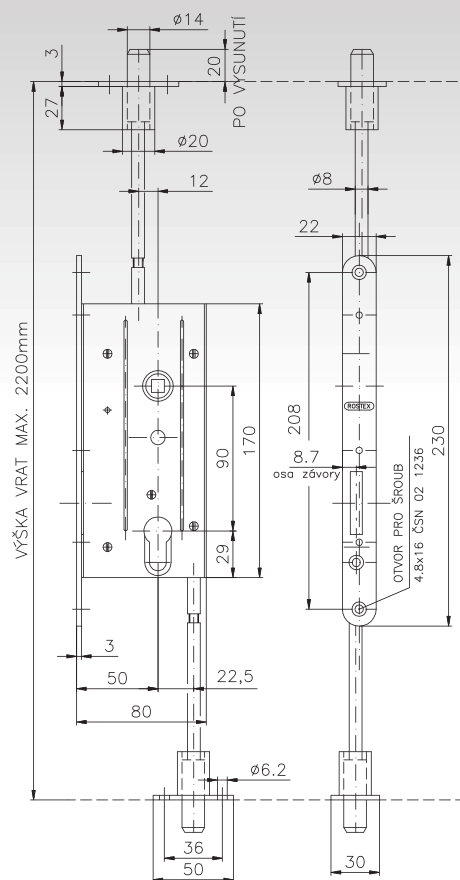
Left: product no. 4858250300

Right: product no. 4858250200



**bolt lock  
for security doors**

# Mortise LOCKS



**three point garage lock**

**Finish:** Zn

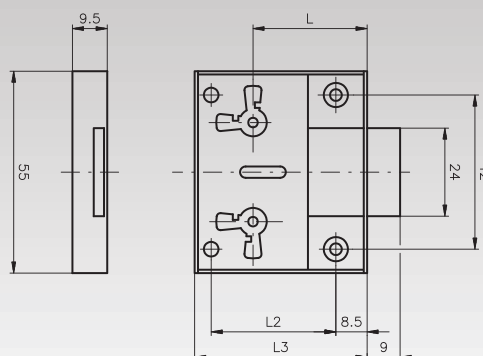
**Option:** BB, PZ, WC

**Variant:** Universal - L, R

# FURNITURE FITTINGS

## FURNITURE LOCK

117/30



**Application:** Designed for locking cabinets and drawers

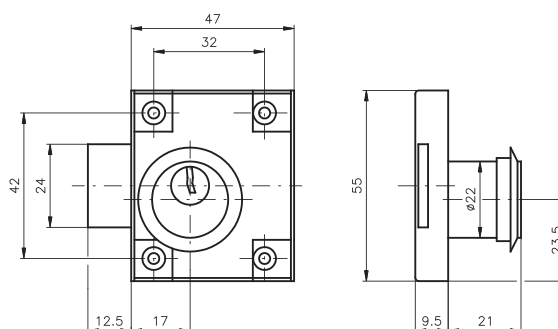
**Variant:** Universal

Size L 30 40

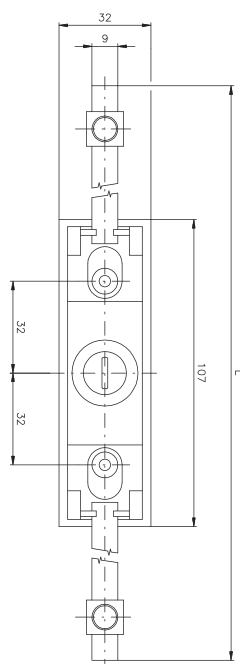
Size L2 34 44

Size L3 47 57

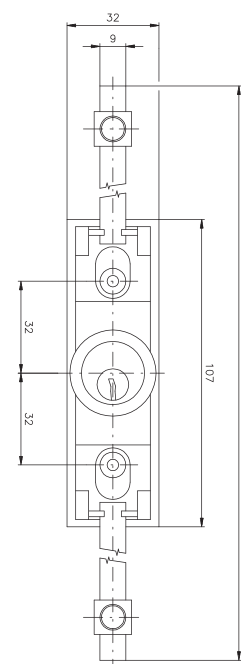
118/50



701



702



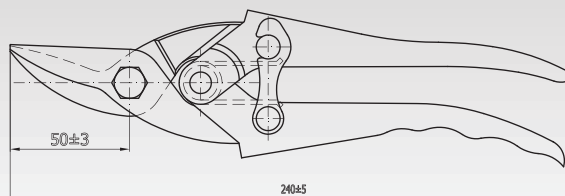
Two way throw rods on request.

# HAND TOOLS

## SHEET METAL PLATE SHEARS

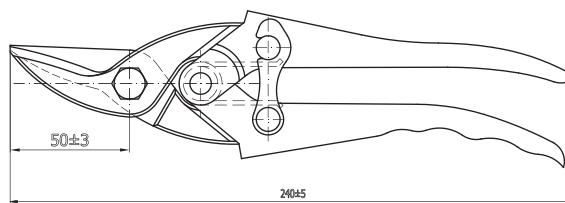
### Lever plate shear 2325 - right

**Application:** metal cutting up to a thickness of 1,3 mm



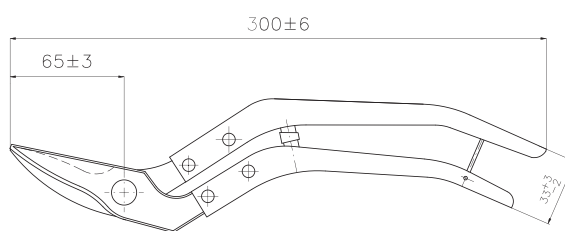
### Lever plate shear 2326 - left

**Application:** metal cutting up to a thickness of 1,3 mm



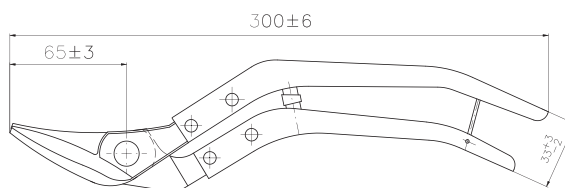
### Plate shears straight cut 2323

**Application:** metal cutting up to a thickness of 1,3 mm



### Plate shears off set cut 2324

**Application:** metal cutting up to a thickness of 1,3 mm

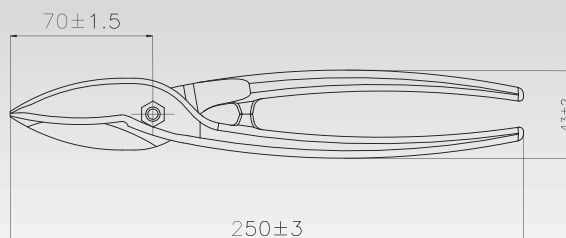


# HAND TOOLS

## SHEET METAL PLATE SHEARS

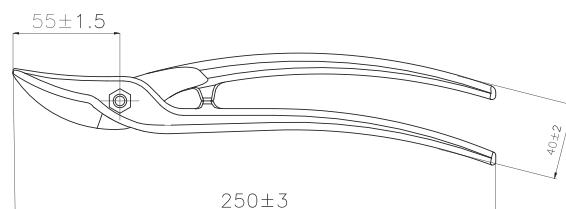
### Straight cut 2342

**Application:** metal cutting up to a thickness of 1 mm



### Curved cut 2344

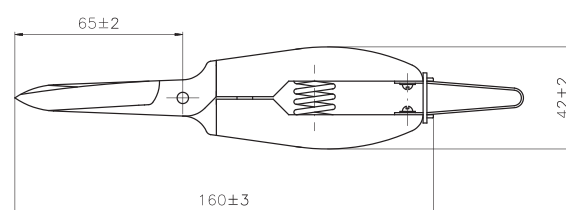
**Application:** metal cutting up to a thickness of 1 mm



## CRAFTSMAN SCISSORS

### 2405

**Application:** thread cutting and other small works



## SPARE PARTS



spring 2323, 2324



spring 2325



spring 2405



ČESKÝ  
VÝROBEK  
CZECH PRODUCT



**ROSTEX VYŠKOV, s.r.o.**  
Dědická 190/17  
682 01 Vyškov  
Czech Republic

**[www.rostexhandles.com](http://www.rostexhandles.com)**